

Image Brochure

Smart Intralogistics Solutions



kardex

About Kardex

Kardex is a leading intralogistics solution provider of automated storage, retrieval, and material handling systems in an attractive and growing market. With two entrepreneurially managed divisions, Kardex Remstar and Kardex Mlog, as well as Corporate Ventures (Rocket Solution, SumoBox, Kardex AS Solutions) offering complimentary cutting-edge technology, Kardex developed into a global industry partner.

Kardex has four manufacturing facilities and approximately 2,000 employees in over 50 countries worldwide. Kardex Holding AG is listed on the SIX Swiss Exchange since 1987.

Kardex Remstar is a global market leader for dynamic storage, retrieval, and material handling solutions. Kardex Mlog has a leading position in Central Europe for stacker cranes, conveyor systems, and automated material handling systems. The two divisions are unified under a strong group brand.

With over 140,000 installations Kardex has a broad existing customer base that counts on first-class after-sales services.

Both divisions, as well as all the Corporate Ventures, are subject matter experts about trends, pains, and logistics requirements in selected industry segments.

Global
footprint

Industry
specific
solutions

Over
140,000
installations

Who we are

4 – 5 Guiding Principles

6 – 7 Sustainability (ESG)

8 – 11 Industry Segments

12 – 15 Technology

16 – 19 Life Cycle Service



Guiding Principles

Kardex strives to create an environment where positive spirit, enthusiasm and individuality can flourish. The Guiding Principles and the core values define the cornerstones of the corporate culture and provide a clear code of conduct for all activities. The brand promise – straightforward, innovative and fair – guides the company in setting daily priorities and customer relationships.



Respect

- We meet at level par, act with tolerance and mutual respect
- We decide in a transparent way
- We treat each other with openness, fairness and honesty and promote a constructive communication culture
- We accept rules and decisions and implement them actively

Team Spirit

- We trust each other
- We combine our strengths and share ideas and experiences
- We prioritize the common targets in everything we do
- We win together and lose together

Reliability

- We accept responsibility and deliver the promised results
- We stabilize where possible and change where necessary
- We say what we do and we do what we say
- We live our Core Values

Passion

- We are committed and identify with our company
- We strive for continuous improvement and development
- We see setbacks as new opportunities
- We love challenges and are proud of our successes

Sustainability (ESG)

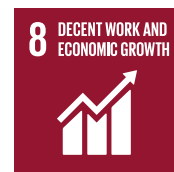
Kardex sees the increased awareness of sustainability in society as an opportunity to meet complex global challenges with committed action and cooperation.

At the heart of Kardex's corporate performance are sustainable customer solutions that allow optimal use of floor and space requirements, thus reducing the latter by up to 85%. Kardex solutions are developed according to ergonomic principles and therefore protect the health of the clients' employees. In addition, the high-quality solutions, especially in combination with excellent customer care provide a long service life. Kardex also pays close attention to the careful use of resources during production.

By joining the UN Global Compact in 2021, Kardex is taking over responsibility and will commit to sustainable and responsible corporate governance as part of the world's largest and most important initiatives. In doing so, Kardex focuses primarily on the following Sustainable Development Goals (SDGs):



Quality education and lifelong learning



Decent work and economic growth



Sustainable consumption and production



Measures for climate protection

 Find the complete sustainability report [here](#)



Industry Segments

Kardex is a global industry partner offering customized intralogistics solutions for individual requirements across various industries. Based on decades of working with small to large-scale businesses in every corner of the globe, Kardex has seen first-hand how every industry has its own unique challenges and demands when it comes to warehouse and plant operations.

The intralogistics experts at Kardex create smart, sophisticated and flexible solutions that individually adapt to each industry segment. The demand for stand-alone subsystems is growing fast as it offers the best return based on the combination of low risk and high levels of standardization.

Kardex is an expert in intralogistics trends, challenges and logistics requirements. Fulfilling the needs of various industries Kardex provides space-saving buffering solutions for manufacturers and fast order fulfillment systems for e-commerce and wholesale warehouses. The Kardex portfolio also includes clean room and temperature-controlled storage environments to fit various needs of hospitals, pharmaceutical companies, electronics manufacturers or food & beverage producers. The Kardex teams are continually enhancing solutions to stay a step ahead of industry challenges and trends.



Trade

As purchasing behavior rapidly changes, it is critical for wholesale, retail and e-commerce providers to integrate innovative, flexible and scalable intralogistics solutions. Too often these warehouses become overwhelmed by complex delivery demands, waste resources by searching and training staff, struggle with manual operations and settle for inefficient storing, picking and packing processes.

Kardex customers have overcome these challenges. Taking into consideration future growth, omni-channel distribution points and demand fluctuations, Kardex customers benefit from scalable solutions that address current and future industry needs. Kardex solutions escalate order fulfillment to the next level by minimizing space, increasing speed, improving accuracy and ensuring operational transparency.



Wholesale/Retail/
E-Commerce



Manufacturing

A break in supply can cause serious repercussions for manufacturing warehouses. Given this type of pressure, how can businesses meet 24/7 demands without impacting costs or jeopardizing regulatory compliance measures? Kardex is an experienced intralogistics partner who understands these specific needs and knows how to optimize space, minimize external logistics costs, guarantee traceability and provide a seamless production process.



Automotive/
Transportation
Equipment



Chemicals



Consumer Goods



Electronics



Food &
Beverage



Kitchen/Wood/
Furniture



Mechanical
Engineering



Pharmaceuticals



Tires



Services

Businesses within the service sector have multiple stakeholders to manage as well as strict regulations to adhere to. Sensitive items require special storage conditions and carefully monitored access controls. Increasing productivity without jeopardizing security is possible with the right partner. As business needs become more complex, due to growing inventory and tighter security, modular and flexible storage solutions will be critical.



Administration/
Services



Healthcare/
Hospitals

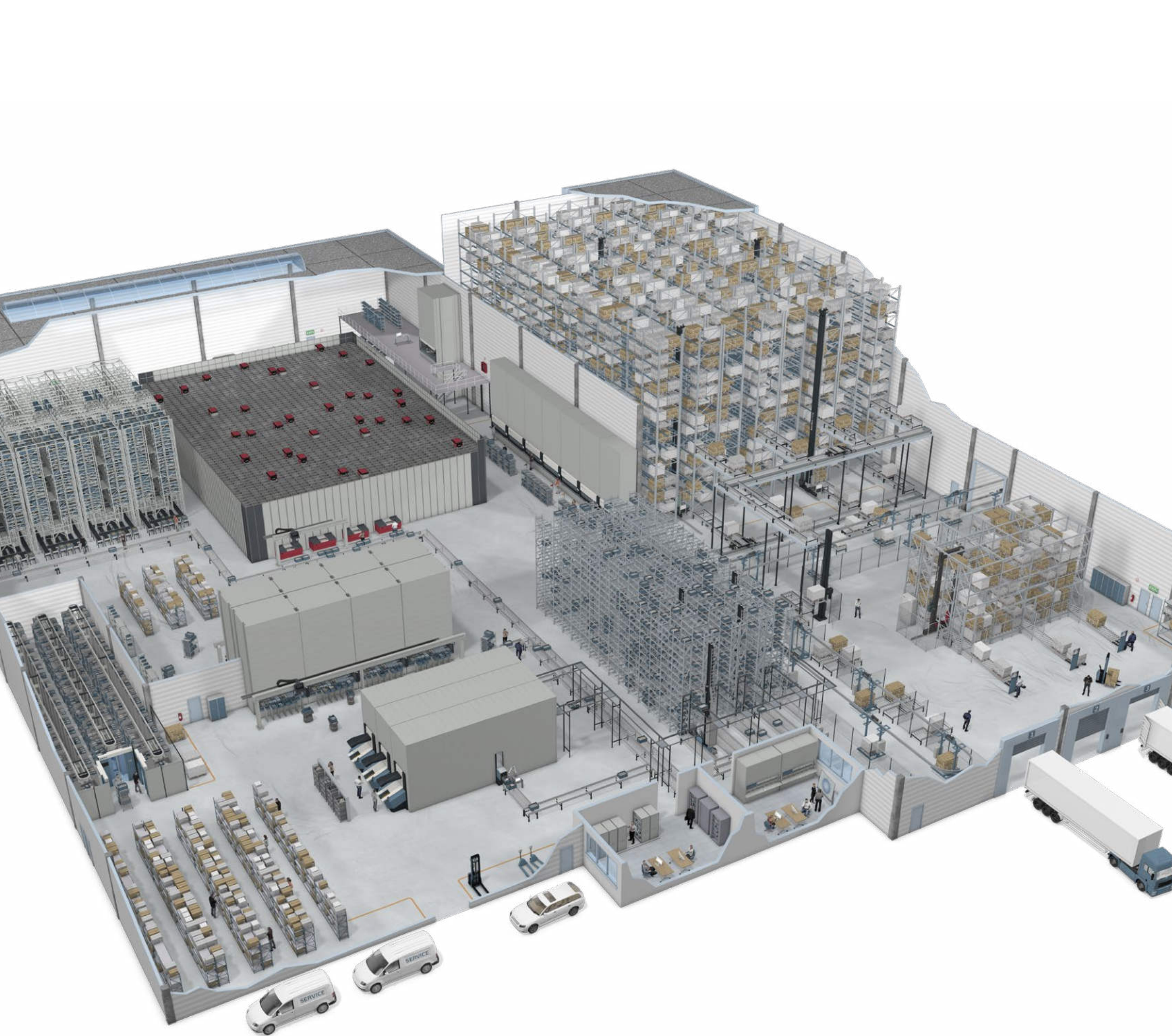


Public
Administration/
Government



Third-Party
Logistics/
Transportation





Technology

Kardex solutions are modular and scalable managing everything from small, light, and single items to heavy and oversized ones. The diverse solution portfolio complimented by modern software guarantees smooth processes and a seamless material flow.

Application range


Use Kardex solutions to efficiently store, sequence, pick, transport, consolidate, buffer and manage products. Kardex solutions escalate order fulfillment to the next level, enable just-in-time production supply and free-up valuable floor space.

A solution for every size

From small parts and full pallets to oversized goods and heavy loads, Kardex solutions deliver transparent storage, picking and handling processes for various sized products. Regardless of inventory dimensions, Kardex provides first-class results with state-of-the-art ergonomics, speed and accuracy.

Software

Kardex offers advanced software solutions that enable a smooth process, operational traceability, inventory transparency and automated material flow. It integrates into existing environments as a centralized control center or as niche technology (e.g., to optimize picking).

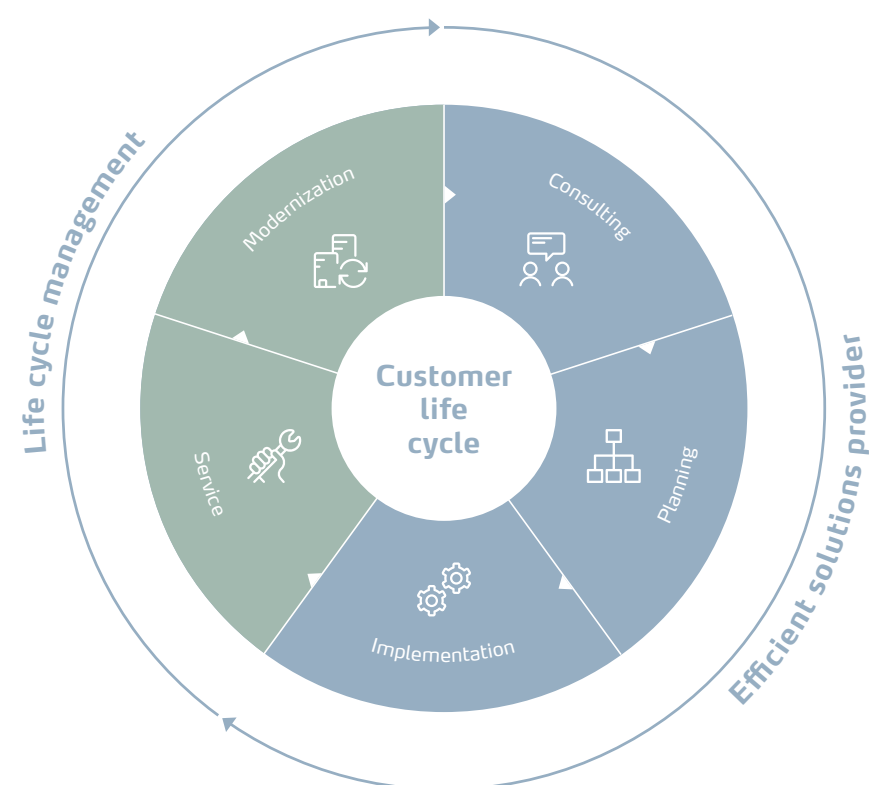
 [Click here to learn more about our technologies](#)

Customized solutions

Kardex features intralogistics solutions ranging from automated products with complementary equipment like bins and accessories, pick-to-light and specialty software to fully integrated automated systems. By combining technology with an aim to improve efficiency, Kardex offers standardized, stand-alone subsystems, that are both modular and scalable.

Kardex works hand in hand with its customers every step of the way. Starting with the initial inquiry, the customer shares their challenges and goals. Based on the specific needs, Kardex presents the best intralogistics solution. Once identified, the realization process begins and Kardex ensures all budget and time requirements are met.

Kardex trains team members and provides ramp-up support for a smooth go-live. It doesn't stop there. Customers can depend on continuous high availability and regular performance optimization support during a solution's entire life cycle. Given the scalability and flexibility of the solutions, modular additions and extensions are viable future steps.



Life Cycle Service

In an increasingly dynamic market environment, unanticipated issues can often have serious consequences. The Kardex Life Cycle Service (LCS) team offers support and help wherever it is needed throughout a solution's entire life cycle. Whether a solution needs maintenance, optimization, modernization or training and consulting; Kardex will support its customers to reach their operative goals.

After a successful planning stage, Kardex ensures a smooth go-live with ramp-up support and operator training. Kardex offers continuous helpdesk and software support with easily accessible spare parts as well as ongoing maintenance and safety checks.

The LCS team provides a holistic, flexible and modular solution that ensures logistics and warehousing systems operate effectively. In addition to on-site services, Kardex offers digital solutions like Remote Support and preventive maintenance that ensure the longevity and ROI of a solution.

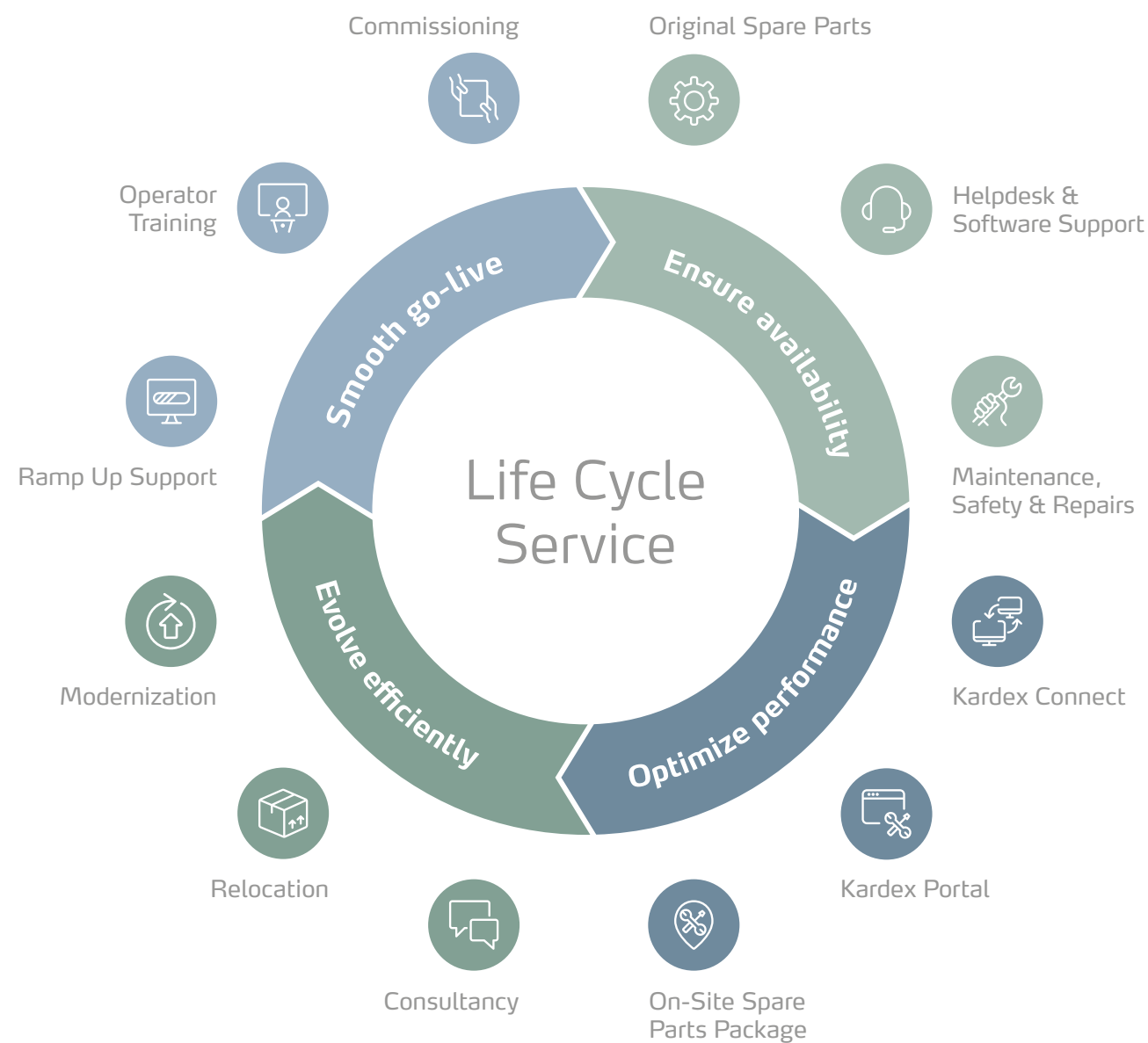
Kardex is ready to help with future planning and forward-thinking projects. Perhaps relocating is in the pipeline or inventory and business demands have changed? The LCS team offers support at any time with relocations and system modifications as well as expansions or modernizations to keep pace with changing business requirements and integrate new technologies.

Safety &
reliability

Highest
availability

Maximum
life cycle





Smooth go-live

Kardex's skilled technicians offer complete commissioning and ramp-up support including assembling, installing and activating new systems. The technicians train personnel and ensure a smooth handover into daily operations. The trainings enable a quick start, provide a solid return on investment (ROI) and ensure that users and maintenance personnel operate and maintain the equipment safely and efficiently. The experienced Kardex team will support a project from conception to completion.

Ensure availability

Maintenance, safety and repair services from Kardex include regular system check-ups that keep all systems functioning safely and at top performance. In case of a problem, the helpdesk and software support offers fast and knowledgeable assistance. Skilled technicians are available around the clock and can solve most problems over the phone. This ensures longevity and guarantees rapid repairs.

Optimize performance

Kardex's digital services detect errors early on and allow proactive maintenance from afar. By digitally connecting Kardex solutions, customers will benefit from smart services such as Remote Support, Analytics, Monitoring and Videoconferencing. The system creates a service request automatically if a fault occurs. Kardex recommends on-site spare parts to minimize downtime – they increase the first-time fix rate by 30%, while saving time and labor costs.

Evolve efficiently

By offering operational consulting services, Kardex continuously enhances customer processes and makes recommendations for improvements relating to the picking process, material flow and machine utilization. During a relocation, Kardex technicians disassemble, transport, re-assemble, and test the systems to manage a smooth move. The modernization services provide state-of-the-art technology for existing solutions. Kardex modernizes, modifies, automates or expands a warehouse without interrupting operations.

Combining global and local resources

Kardex is a worldwide industry partner that offers semi and fully automated intralogistics solutions. Its global footprint allows a strong basis to provide sales and services worldwide. Local specialists assist customers from project analysis to realization and provide service throughout a solution's entire life cycle. When you are ready to take your intralogistics to the next level, contact a local team member for a complimentary, on-site consultation.

