


SWISS MICRO TECHNOLOGY




Rudolf Brügger 
SWISS
MICRO
TECHNOLOGY



RUDOLF BRÜGGER IS A MODERN, LEADING SWISS COMPANY IN THE PLANNING AND PRODUCTION OF HIGH PRECISION MICRO-MECHANICAL COMPONENTS. THESE PARTS ARE MADE OF EXTRA HARD MATERIALS SUCH AS RUBY, SAPPHIRE, HARD METALS, ALLOYS, TECHNICAL CERAMICS, TITANIUM AND STAINLESS STEEL.

THE COMPANY WAS ESTABLISHED IN 1949 AT MINUSIO, ON THE SWISS SHORES OF LAKE MAGGIORE. WITH EXPERIENCE AND CONTINUAL GROWTH RUDOLF BRÜGGER COMBINES THE ACCURACY OF TRADITIONAL PRODUCTION WITH DYNAMIC CNC TECHNOLOGY, ALLOWING THE COMPANY TO OBTAIN A HIGH LEVEL OF KNOW-HOW.

1953 RUDOLF BRÜGGER OPENED A SUBSIDIARY IN SPIEZ, CANTON BERNE. SPECIALISATIONS IN PRODUCTION AND WORKING PROCESSES OF COMPONENTS MADE OF HARD METAL, RUBY AND SAPPHIRE, ALLOWED THE COMPANY TO DEVELOP AND CONSOLIDATE BUSINESS RELATIONS WITH IN THE HEART OF THE SWISS WATCH- AND INDUSTRIAL MARKETS.



RUBY JEWELS FOR WATCH INDUSTRY

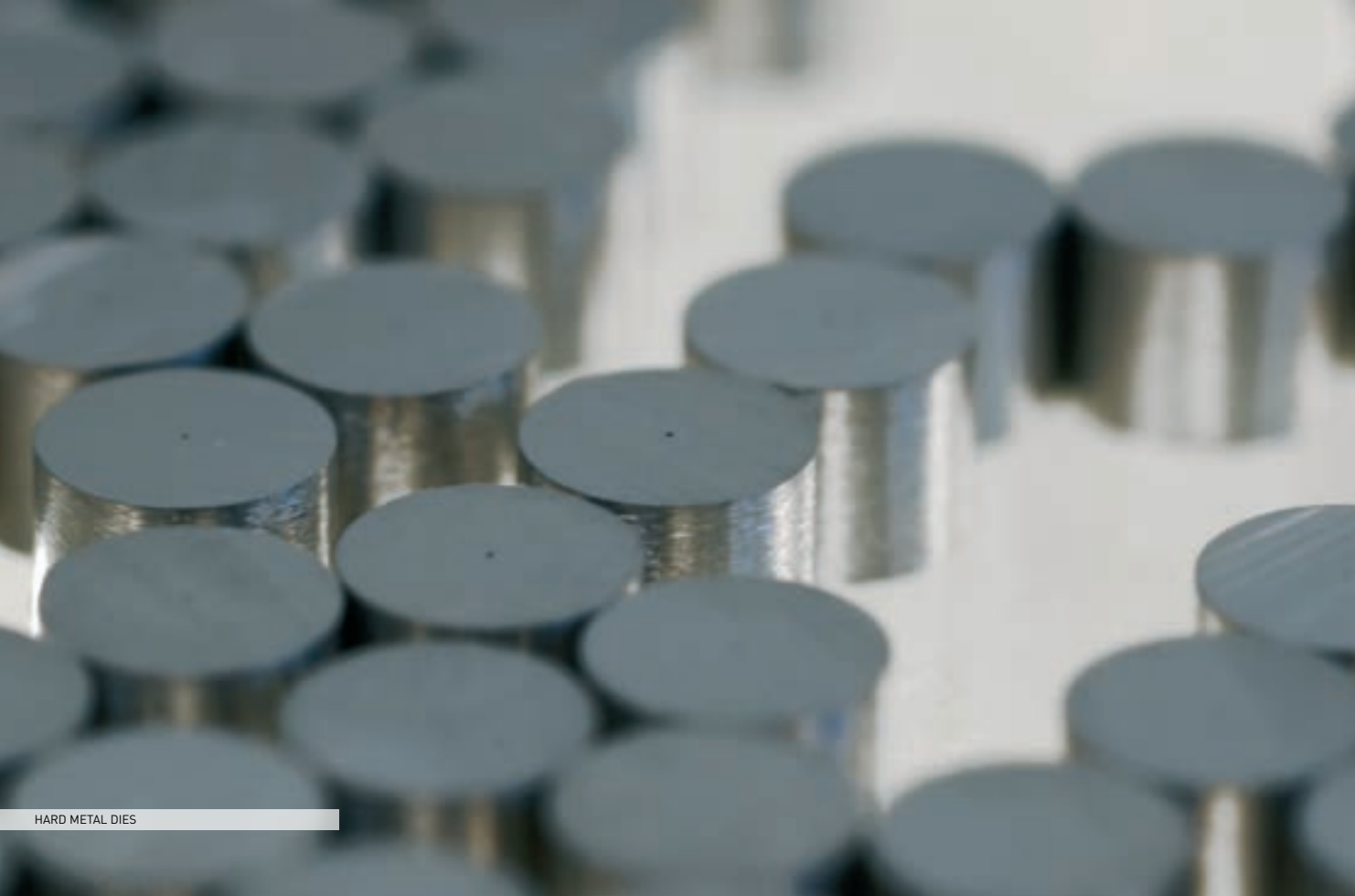
FLEXIBLE AND INNOVATIVE SOLUTIONS ON A HIGH TECH LEVEL ARE RECOGNIZED BY INTERNATIONAL CUSTOMERS IN VARIOUS APPLICATION FIELDS.

QUALITY, PRECISION AND RELIABILITY ARE THE DISTINGUISHED FEATURES CHARACTERIZING ALL ITS MANUFACTURING PROCESSES. THE COMPANY RESPONDS TO THE CONSTANTLY EVOLVING MARKET, COMBINING TRADITION, INNOVATION, TECHNOLOGY, RESEARCH AND CONSULTATION.

IT IS ONE OF RUDOLF BRÜGGER'S CORPORATE PHILOSOPHY TO DEVELOP THE HUMAN RESOURCES THROUGH RESPECT, DIALOGUE, TRAINING AND EDUCATION FOR EMPLOYEES.

Rudolf Brügger 
SWISS
MICRO
TECHNOLOGY





HARD METAL DIES

- SAPPHIRE
- RUBY
- TECHNICAL CERAMICS
- HARD METAL
- TITANIUM DIBORIDE
- EASIUM
- DIABAS
- TITANIUM
- STAINLESS STEEL
- TEMPERED STEEL

MATERIAL

RUDOLF BRÜGGER PROCESSES ALL EXTRA HARD MATERIALS: RUBY, SAPPHIRE, TECHNICAL CERAMICS, HARD METALS, SINTERED MATERIALS, NEW ALLOYS AND SPECIAL GRANITES. ALL USED MATERIALS HAVE SPECIAL PHYSICAL/CHEMICAL FEATURES: EXCEPTIONAL HARDNESS, WEAR, CORROSION, HEAT STABILITY AND ELECTRICAL INSULATION.



DETAIL WATCH BOARD

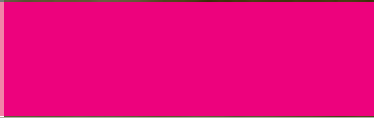
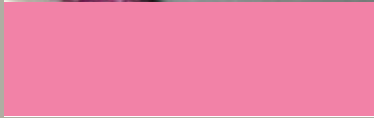
PRODUCTS

A LARGE RANGE OF PRECISION- AND MICRO COMPONENTS DESIGNATED TO VARIOUS APPLICATION FIELDS ARE PRODUCED AND PROCESSED DEPENDING ON CUSTOMERS SPECIFICATIONS OR RESULTING FROM ACCURATE RESEARCH AND DEVELOPMENT FOR NEW PROJECTS.

ALL PRODUCTS ARE EXCELLENT IN QUALITY AND PRECISION, WHETHER FOR A PROTOTYPE OR A LARGE SCALE PRODUCTION RUN AND ALWAYS IN COMPLIANCE WITH THE MINIMUM REQUIREMENTS. THESE PARTS ARE MOSTLY MEASURED IN MICRON.



INDUSTRIAL SAPPHIRE JEWELS





RUBY BALLS FOR SENSING DEVICE



QUALITY

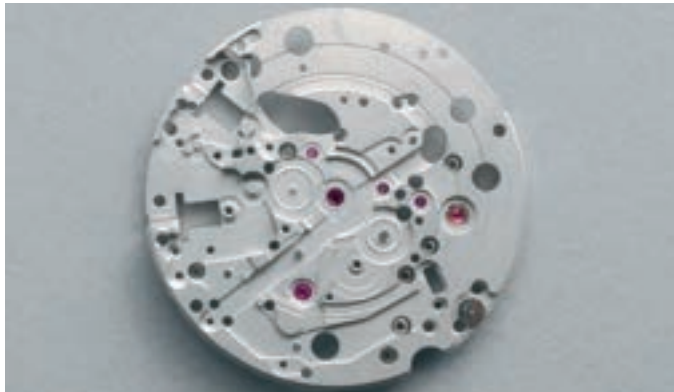
RUDOLF BRÜGGER'S QUALITY POLICY ADVANCES PRODUCTION PROCESSES AND UNSURPASSED FLEXIBILITY COMBINED WITH EXCELLENT VALUE - REGARDLESS OF QUANTITIES - FROM THE CHOICE OF MATERIALS AND PROTOTYPES TO MASS PRODUCTION AND MANUFACTURING CONTROL. HUMAN RESOURCES, TECHNIQUES AND TECHNOLOGIES ARE BACKED UP TO OBTAIN ULTIMATE RESULTS IN THE MICRO TECHNOLOGY FIELD. THE COMPANY IS ISO 9001:2000 CERTIFIED.



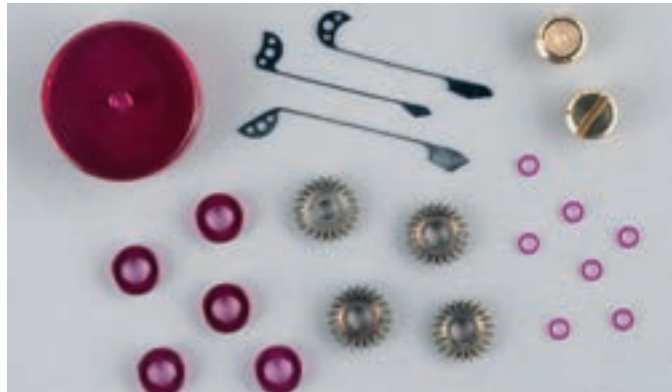
DETAIL WATCH BOARD

PRODUCTS

A LARGE RANGE OF PRECISION- AND MICRO COMPONENTS DESIGNATED TO VARIOUS APPLICATION FIELDS ARE PRODUCED AND PROCESSED DEPENDING ON CUSTOMERS SPECIFICATIONS OR RESULTING FROM ACCURATE RESEARCH AND DEVELOPMENT FOR NEW PROJECTS. ALL PRODUCTS ARE EXCELLENT IN QUALITY AND PRECISION, WHETHER FOR A PROTOTYPE OR A LARGE SCALE PRODUCTION RUN AND ALWAYS IN COMPLIANCE WITH THE MINIMUM REQUIREMENTS. THESE PARTS ARE MOSTLY MEASURED IN MICRON.



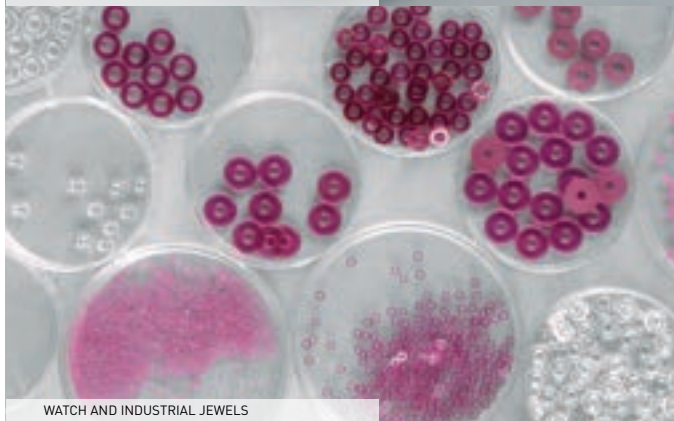
RUBY JEWELS IN A WATCH BOARD



PARTS FOR THE WATCH INDUSTRY



CERAMIC PARTS



WATCH AND INDUSTRIAL JEWELS



RUBY, SAPPHIRE AND CERAMIC BALLS



SENSING DEVICE

- JEWELS FOR WATCH INDUSTRY
- BEARING JEWELS
- INDUSTRIAL JEWELS
- BALLS AND PRISMS
- MOULDS AND DIES
- PROTOTYPES
- NOZZLES FOR INKJET, DIFFUSERS, DISPENSERS AND VALVES
- TOOLING





MEDICAL PARTS



MECHANICAL HIGH PRECISION PARTS



MECHANICAL HIGH PRECISION PARTS



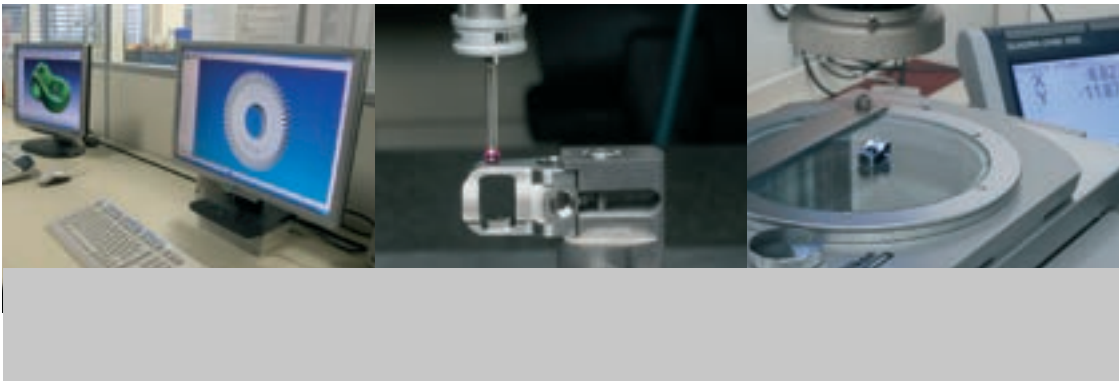
MEDICAL PARTS



WIRE GUIDES FOR ELECTRO EROSION



AEROSPACE AND AERONAUTIC PARTS



APPLICATION FIELDS

- MICROMECHANICS
- PRECISION MECHANICS
- WATCH INDUSTRY
- ELECTRONICS
- MEDICAL
- ORTHOPEDICS
- AERONAUTICS
- AEROSPACE
- TEXTILES
- FOOD PROCESSING
- CHEMICALS
- PHARMACEUTICALS



LOWER HEAD BODY VERTEX



5 AXIS MACHINING

MACHINING

THE VARIOUS MACHINING STEPS, WHETHER WITH TRADITIONAL MACHINES OR CNC (5 AXIS) CONTROLLED ARE PROCESSED BY HIGHLY QUALIFIED PERSONNEL. TO FULFILL SPECIAL REQUESTS FOR CHALLENGING CUSTOMERS, THE COMPANY GUARANTEES A HIGH LEVEL OF FLEXIBILITY AND ADAPTABILITY. RUDOLF BRÜGGER MAINTAINS THEIR TRADITIONAL MACHINE PARK BY IN HOUSE REVISION THROUGH SPECIALIZED PERSONNEL.

ENGINEERING

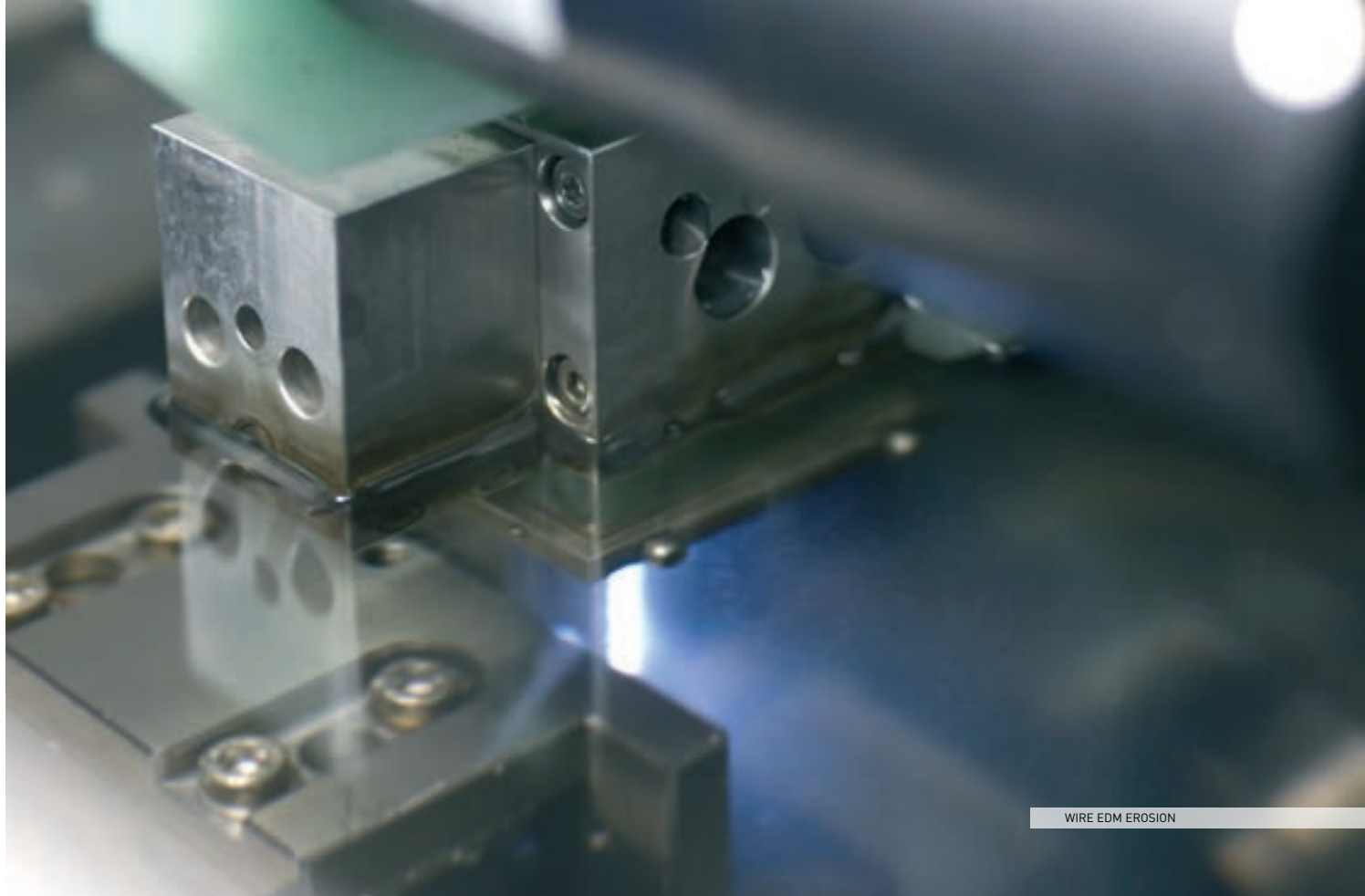
THANKS TO THE LONG TRADITION OF WORKING WITH HIGH TECHNOLOGY, RUDOLF BRÜGGER IS ABLE TO DEVELOP AND OPTIMIZE PROJECTS, RESPECTING THE ABSOLUTELY DATA SAFETY AND PROPOSE INNOVATIVE AND TECHNICAL SOLUTIONS. THE COMPANY REALIZES ANY ADAPTATION ON THEIR OWN MACHINES, NECESSARY FOR PROCESSING PARTICULAR AND COMPLEX COMPONENTS.

SOPHISTICATED OPTICAL, MECHANICAL AND THREE DIMENSIONAL CONTROL SYSTEMS ENSURE SYSTEMATIC VERIFICATION AND HIGHEST QUALITY STANDARDS OF THE PRODUCT DURING THE VARIOUS PRODUCTION STEPS.

- RESEARCH AND DEVELOPMENT
- CAD/CAM DESIGN
- PROTOTYPES
- SPECIAL PRODUCTION RUNS
- PROBLEM SOLVING
- QUALITY CONTROL
- DATA BASE FOR PROJECTS



LOWER HEAD BODY VERTEX



WIRE EDM EROSION

MACHINING

THE VARIOUS MACHINING STEPS, WHETHER WITH TRADITIONAL MACHINES OR CNC (5 AXIS) CONTROLLED ARE PROCESSED BY HIGHLY QUALIFIED PERSONNEL. TO FULFILL SPECIAL REQUESTS FOR CHALLENGING CUSTOMERS, THE COMPANY GUARANTEES A HIGH LEVEL OF FLEXIBILITY AND ADAPTABILITY. RUDOLF BRÜGGER MAINTAINS THEIR TRADITIONAL MACHINE PARK BY IN HOUSE REVISION THROUGH SPECIALIZED PERSONNEL.

- WIRE EDM
- DIESINKING EDM
- GRINDING
- DRILLING
- CNC TURNING
- CNC MILLING
- LAPPING
- 3D CONTROL





DÉGROSSISSAGE

- PERÇAGE
- GRANDISSAGE
- TOURNAGE
- OLIVAGE
- CREUSAGE
- DÉGROSSISSAGE
- VÉRIFIAGE
- POLISSAGE



CONTACTS

RUDOLF BRÜGGER SA
VIA D. BACILIERI 24
CASELLA POSTALE 1071
6648 MINUSIO
SWITZERLAND
TEL +41 91 743 54 13
FAX +41 91 743 54 60
INFO@RUDOLFBRUGGER.COM

RUDOLF BRÜGGER AG
OBERE BAHNHOFSTRASSE 14
POSTFACH 61
3700 SPIEZ
SWITZERLAND
TEL +41 33 654 45 45
FAX +41 33 654 45 55
SPIEZ@RUDOLFBRUGGER.COM

WWW.RUDOLFBRUGGER.COM