

T|R|B|O|S®-Mini HSK-EZ15

The ideal toolholder for
micro-machining

Hand in hand for tomorrow



Precise tool clamping for micro-machining

Precise micro-machining in confined and hard-to-reach machining areas is one of the key strengths of TRIBOS. SCHUNK offers the optimal tool clamping solution, particularly for the demands in micro-machining, with its patented program for TRIBOS polygonal clamping technology.

Rotationally symmetrical design

Best surface results at high rotational speeds

Minimal interfering contour

Perfectly suited for 5-axis machining

Compact interface, maximum precision

The optimal mounting-to-taper ratio provides high precision and performance on micro-machines

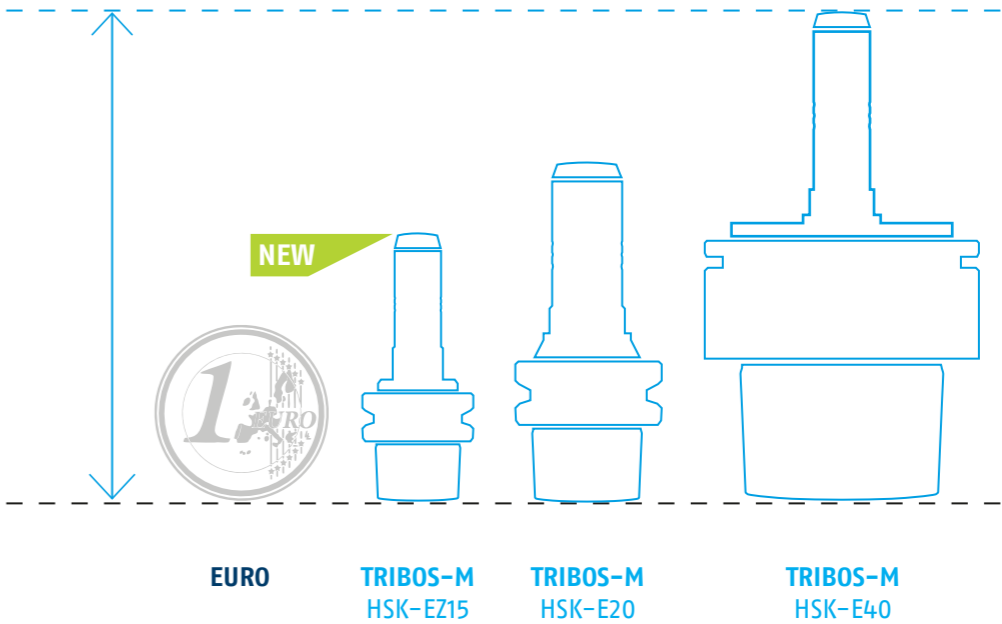
The easiest way to clamping tools



TRIBOS-Mini is perfectly suited for micro-machining thanks to its rotationally symmetrical design, easy handling, and reliable run-out accuracy of <0.003mm.

Thanks to its slim design, it optimally exploits the limited machining space of the new micro-machines.

- + Proven technology**
Successful in micro-machining for decades
- + Easy clamping**
Compatible with all SVP clamping devices
- + One-piece design**
Minimal imbalance during machining



TRIBOS clamping devices for easy tool change

TRIBOS-Mini/ RM SVP

With the newly designed TRIBOS-Mini SVP and TRIBOS-RM SVP clamping devices, tools can be exchanged in a matter of seconds. Insert the toolholder into the clamping device, clamp to the stop, insert the tool, release the clamping device – done. Thanks to the pre-set pressure, the tool is clamped quickly and reliably. This saves time and significantly reduces set-up costs.



TRIBOS SVP-2/2D

Clamping device for fast and easy tool changes. With the TRIBOS SVP-2/2D clamping device, the polygonal clamping diameter of the toolholder is transformed into a round shape, allowing the tool shank to be easily inserted. Using the corresponding SRE reduction inserts, all TRIBOS systems of the corresponding diameter can be clamped.

TRIBOS SVP-2 with standard pressure gauge, TRIBOS SVP-2D with adjustable pressure control.



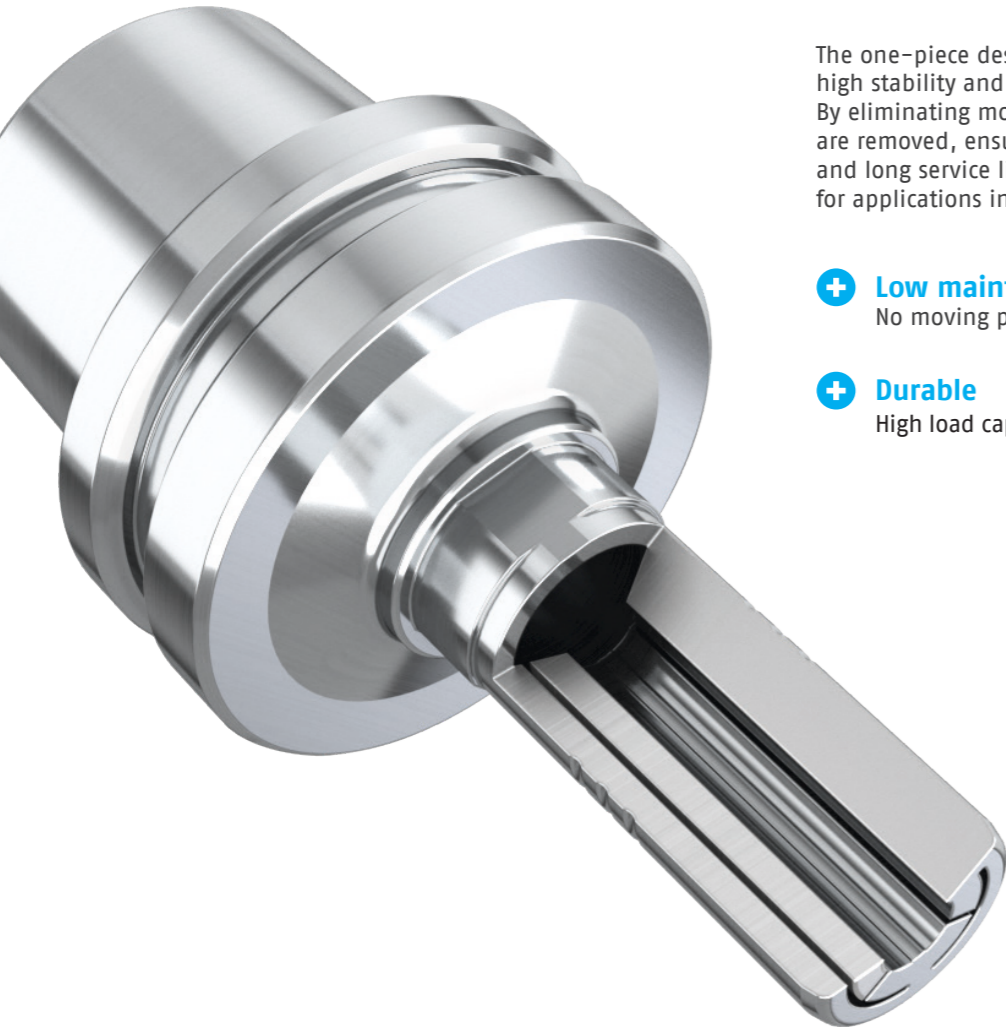
TRIBOS SRE

The TRIBOS SRE reduction insert is used as an adapter between the SVP-2/D clamping device and the TRIBOS toolholder.

During the tool change, the precision mounting together with the matching TRIBOS SRE is inserted into the designated opening of the TRIBOS SVP-2/D clamping device.

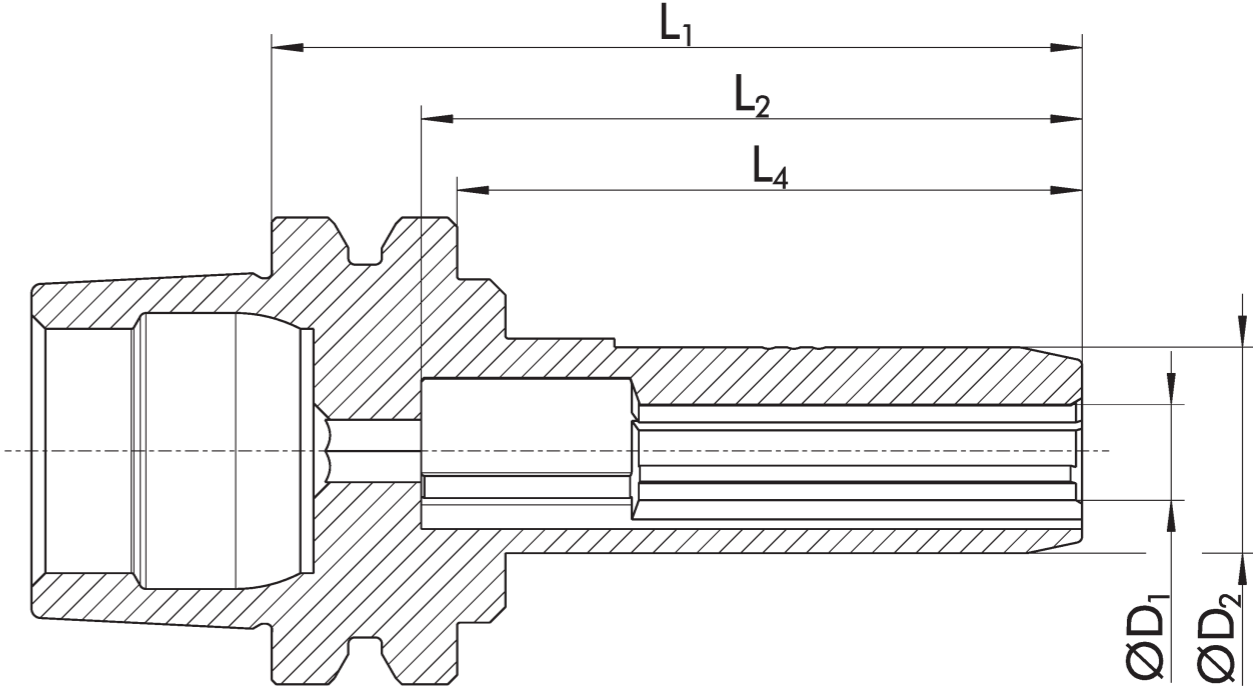


Compact, stable and made from a single piece



The one-piece design of the TRIBOS-Mini ensures high stability and precision in tool clamping. By eliminating moving parts, potential weak points are removed, ensuring consistent force transmission and long service life. This makes the TRIBOS-Mini ideal for applications in micro-machining.

- Low maintenance**
No moving parts, for reduced wear
- Durable**
High load capacity thanks to monolithic design



Technical data

ID	D ₁ [mm]	D ₂ [mm]	L ₁ [mm]	L ₂ [mm]	L ₄ [mm]	M _{min} [mm]	Weight [kg]	SRE-ID
1607400	1	6.65	26	21.2	20	0.5	0.012	25005968
1607416	1.5	6.65	26	21.2	20	0.5	0.012	25005968
1607417	2	6.65	26	21.2	20	0.5	0.012	25005968
1607418	2.5	6.65	26	21.2	20	0.5	0.012	25005968
1607419	3	6.65	26	21.2	20	0.9	0.012	25005968
1607420	4	6.65	26	21.2	20	1.1	0.012	25005968

Design
Optimal for light machining – observe radial forces

Run-out accuracy
< 0.003 mm at 2.5 x D

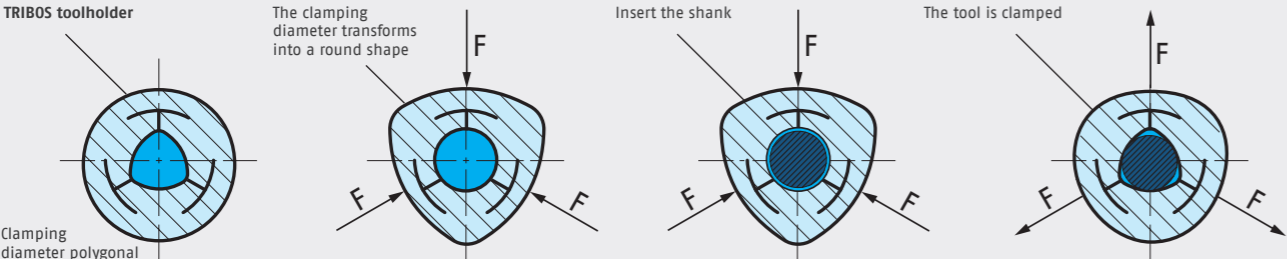
Tool shank quality
h6

Learn more!
For further information or any questions,
we are happy to assist you.

Tel. +49-7133-103-2500
cms@de.schunk.com



TRIBOS functional principle





SCHUNK SE & Co. KG
Spanntechnik
Greiftechnik
Automatisierungstechnik

Bahnhofstr. 106 – 134
D-74348 Lauffen/Neckar
Tel. +49-7133-103-0
info@de.schunk.com
schunk.com

Follow us

