



NEW PRODUCTS



Meeting the Evolving Challenges of Modern Building and Energy Infrastructure

Dear Readers,

We continually develop our products and solutions to provide you with the highest standards needed to meet the challenges of our rapidly evolving world. ESG reporting is becoming increasingly important and is even mandatory for many companies. With WAGO Building Energy Reporting – a new pillar of WAGO Building Cloud Services – we support you in meeting these requirements. This functionality enables the creation and distribution of energy and environmental reports.

In addition to WAGO Building Energy Reporting, new functions are now also available for WAGO Solution Builder, WAGO Application Building Control, WAGO Application Lighting Management and WAGO Application **flexROOM®**.

However, the demands are not only changing in buildings. This requires secure network operation around the clock. And this is regulated in § 14a of the Energy Industry Act (EnWG). To automatically control low-voltage networks, we now offer a complete solution and actively support you in implementing the §14a EnWG.

You can learn more about this and our other innovations in power engineering, mechanical and systems engineering, control cabinet manufacturing, electrical installation and device connection technology in this issue. We hope you enjoy this informative read!

Best regards,

Martin Hardenfels
Head of Business Development Building



04

WAGO BUILDING ENERGY REPORTING

WAGO Building Energy Reporting enables automatic generation and scheduled email transmission of energy and environmental reports, for example, as part of the ESG report.



COMPLETE SOLUTION FOR THE DISTRIBUTION NETWORK AND COMPLIANCE WITH §14A ENWG (ENERGY INDUSTRY ACT)

Secure, monitor and analyze distribution network operation with WAGO Grid Gateway, WAGO Grid Stabilizer and WAGO Grid Monitoring.



CONTENT

Building Technology

Building Automation	4
---------------------	---

Power Engineering

Energy Management and Monitoring	10
----------------------------------	----

Mechanical Engineering

Controllers	15
WAGO I/O Systems	18
WAGO Edge Devices	19
Network Infrastructure	20

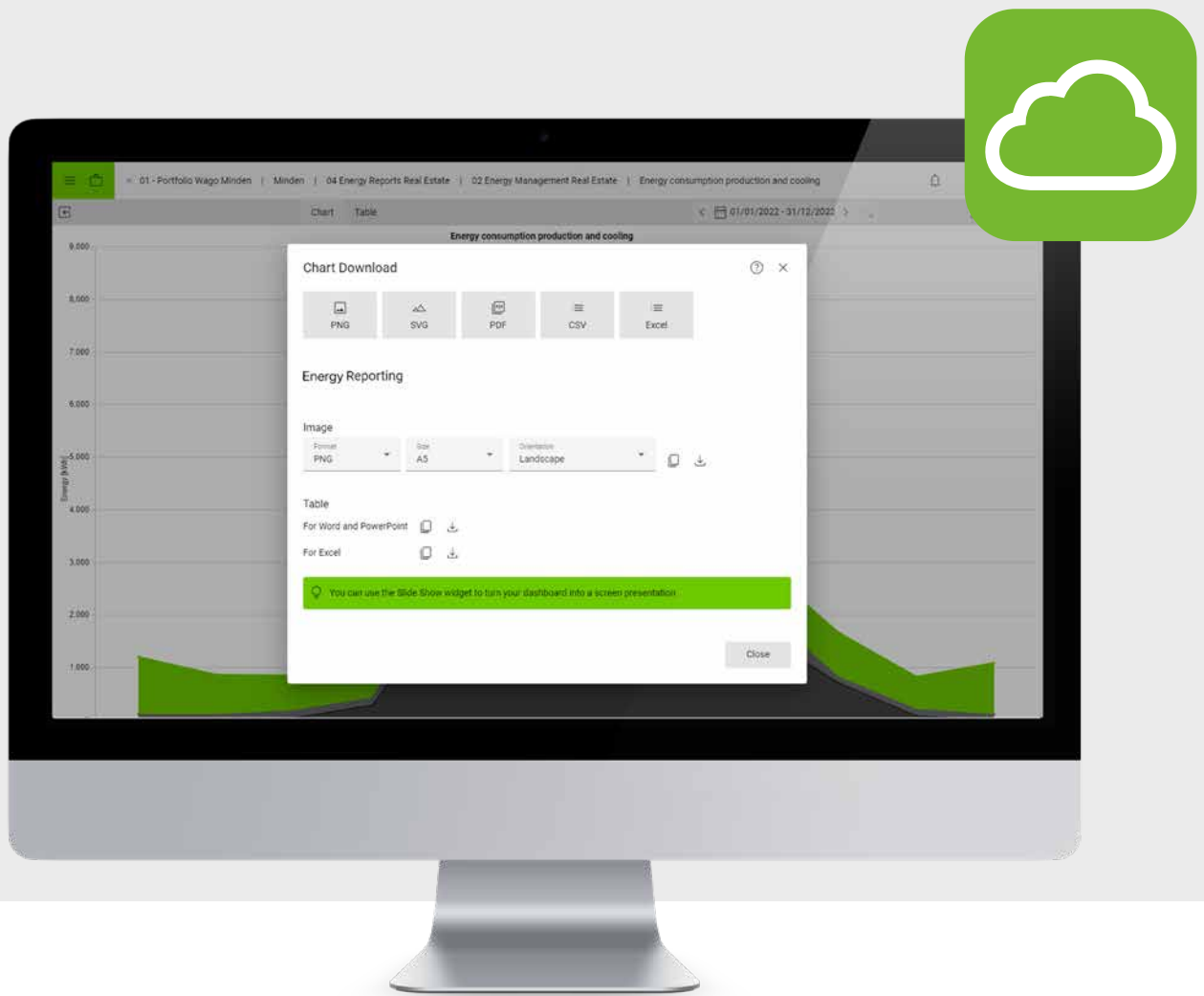
Control Cabinet Manufacturing and Electrical Installation

WAGO Green Range	21
WAGO Cabinet Wiring Robot	22
WAGO Rail-Mount Terminal Blocks TOPJOB® S	24
WAGO MID Energy Meters	25
WAGO Power Supplies	26
WAGO Relays	27

Device Connection Technology

Online Tools	28
PCB Connection Technology	29

Briefly Noted: More News	30
--------------------------	----



WAGO Building Cloud Services: WAGO Building Energy Reporting Automated Reporting

Expansion of WAGO Building Cloud Services

WAGO Building Cloud Services, a pillar for management and reporting in the WAGO Building Ecosystem, now includes the WAGO Building Energy Reporting module.

The latter enables automatic generation and scheduled email transmission of energy and environmental reports, for example, as part of the ESG report.

Recurring Reports Easily Created:

1. Create the report template in Microsoft Office (Word, Excel or PowerPoint).
2. Add the data and evaluations as placeholders.
3. Now upload the template to WAGO Building Cloud Services.
4. When your report is created, the information is automatically inserted into a report template, saved as a PDF and emailed (if requested).

With this service, energy managers and other responsible parties can regularly monitor the current energy and CO₂ balance sheet. This completes WAGO Building Energy Reporting with WAGO Building Cloud Services – for an integrated system that not only includes the legal provisions for energy management and ESG reporting but also various sustainability aspects.

**Software****Item Number:**

2761-1040

**Available****Your Benefits:**

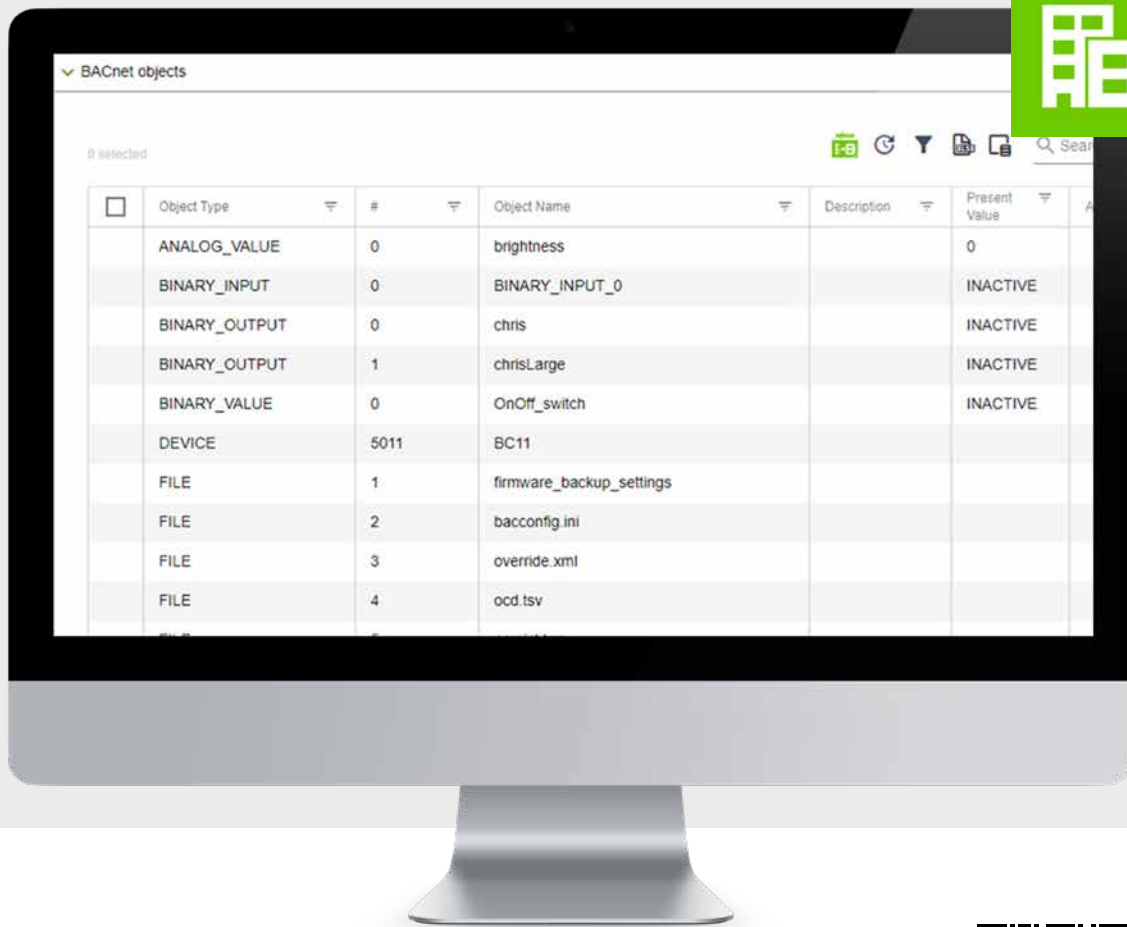
- Streamlined report generation
- Ensuring report quality
- Scheduled email delivery

Stay informed – let's connect on social media

Want to stay informed about everything related to WAGO?
Follow us on social media: LinkedIn, Facebook and Instagram.
Get the latest news on industry trends, upcoming trade shows and our products.



**SUBSCRIBE
FREE NOW!**



WAGO Solution Builder

Expanded Functions Increase User Benefits

New functions are expanding the WAGO Solution Builder – the engineering tool that emerged from building automation to optimally support your automation projects as a holistic and efficient software solution.

After more than three years on the market, user feedback has shaped extensions that further increase the efficiency of working with WAGO Solution Builder.



BACnet® Monitoring Directly from WAGO Solution Builder

BACnet® and BACnet/SC users can now monitor BACnet® objects directly in the WAGO Solution Builder without launching the WAGO BACnet® Configurator.



BACnet/SC Certificate Handling Expanded

Since the previous version, certificate handling for BACnet Secure Connect (BACnet/SC) has been extensively supported. Now, users can scan in BACnet/SC and, if needed, access the WAGO BACnet® Configurator directly with the appropriate security settings with a single click.



Immediate Use of Standard Applications

Standard applications, such as WAGO Application *flexROOM*®, WAGO Application Lighting Management, and others, are gradually becoming available in the WAGO Download Center for direct use in the WAGO Solution Builder. The simplified workflow now consists of only three steps: fetch, assign and synchronize.



Access Protection for WAGO Solution Builder

In addition to access protection and user management for individual solutions, the entire WAGO Solution Builder can now be secured with a username and password. For example, only administrators can manage the central firmware and IPK repository.



Fieldbus Coupler Detection for Older Generations

WAGO Solution Builder now detects older fieldbus couplers without Linux® and SSH access via a smart scan function on the Web-Based Management page. This also enables easy documentation, including serial numbers and firmware details.



Software

Item Numbers:

2759-0132/1119-1012

2759-0132/1119-3012

2759-0132/1119-6012



Available





WAGO Building Control Application The Building at a Glance

WAGO Application Building Control, a pre-programmed application software for controlling lighting, shading, heating, air conditioning, and ventilation, has received several new features with the V1.2 update for flexible application in building automation.



Your Benefits:

- Improved handling of the data point catalog through filter options
- Interface for the KNX® Communication Protocol and WAGO Building Cloud Services
- A more cost-effective S license for use on the WAGO Compact Controller 100; this license can also be used for the WAGO PFC control line.
- The application visualization can be split up, displaying more content overall.



Software

Item Numbers:

2759-2120/26x-1000

2759-2121/26x-1000



Available



WAGO Application Lighting Management V2.4

Lighting Management – Now with Remote I/Os via ETHERNET Coupler

WAGO Application Lighting Management, the sophisticated solution for flexible and energy-efficient lighting control in large spaces, now supports the connection of remote I/Os via ETHERNET couplers.



Your Benefits:

- Cost advantages for larger installations with distributed or remote sensors/lights
- Remote I/O and DALI modules simplify wiring and cable routing



Software

Item Numbers:

2759-204/261-1000,

2759-205/261-1000



Available





WAGO Application *flexROOM*® Small Update, Many New Features

For WAGO Application *flexROOM*®, the flexible concept for controlling lighting, sun protection, and temperature in buildings without programming, the new version V3.6 is now available. WAGO Application *flexROOM*® forms the foundation for achieving energy efficiency class A according to EN 15232 and supports the certification of your building as a sustainable green building, e.g., according to national and international systems such as DGNB or LEED. The European Building Directive (EPBD) and the Building Energy Act (GEG) promote a holistic approach to energy management in buildings, making building automation a key element in realizing efficiency potential and meeting legal requirements.



Your Benefits:

- Enhanced flexibility in blind control through readiness for integration with the new WAGO Sunblind Box
- A *flexROOM*® template for the WAGO Solution Builder expedites configuration and commissioning, especially for larger projects
- Color temperature control using Human Centric Lighting (HCL) is now available via scene call-up. The color scenes can be configured and activated as needed.
- Fan coil control for air-conditioning units
- Demand-driven ventilation via volume flow control, including air quality regulation



Software

Item Number:

2759-2110/26x-1000



Available





✓ §14a
EnWG



WAGO Complete Solution per §14a EnWG

Automating Low-Voltage Network Control

Section 14a of the Energy Industry Act (EnWG) guarantees supply security. Network operators must create the necessary conditions for network-oriented control. WAGO offers a complete solution for implementing § 14a and for enabling temporary dimming. It includes monitoring, analysis and safe network operation.

Measuring and Communicating

The WAGO Grid Gateway collects measurement data from substations and transmits it to the control system as part of a controller application. The application provides data for WAGO Grid Monitoring and WAGO Grid Stabilizer in a single device. Various manufacturer-independent measurement technologies can be integrated.

Network Transparency

WAGO Grid Monitoring enables network status assessment in compliance with § 14a. Low-voltage transparency simplifies planning for future-proof network management.

Reliable Through Bottlenecks

WAGO Grid Stabilizer helps manage identified bottlenecks. The application on the WAGO Solutions Platform controls the grid by transmitting the necessary control commands via the BDEW network point API to the metering point operator or gateway administrator.



Your Benefits:

- WAGO as a partner for implementation according to § 14a EnWG
- An all-in-one solution from a single source
- Advantages of the WAGO Solutions Platform: Patch and device management for telecontrol devices



Item Number:

WAGO Application

Grid Gateway:

2759-2015/260-1000



Available

WAGO Grid

Monitoring and

WAGO Grid Stabilizer:

Available via:



WAGO Solutions Platform

Meets the Highest Cybersecurity Requirements

The WAGO Solutions Platform combines project, application and device management for distributed controllers in a central location. WAGO controllers ensure efficient and straightforward processes, from planning to ongoing operation. New features implemented in device management provide even greater convenience: Firmware updates, for example, can be deployed with just the push of a button.

Industry-specific application solutions are available across devices on the WAGO Solutions Platform: WAGO Application Grid Gateway for the digitalization of substations, WAGO Grid Monitoring for visualization, evaluation and preparation for § 14a EnWG of the Energy Industry Act. WAGO Application Load Management regulates charging parks and can expand with the comprehensive WAGO Charging Park Management.

An optimized user interface simplifies device management and administration. Patch and device management ensures the automatic updating of applications or firmware. Devices can be selected with just a few clicks. The WAGO Solutions Platform can be hosted in the cloud by WAGO or on private, company-owned servers (on-premises).



Software

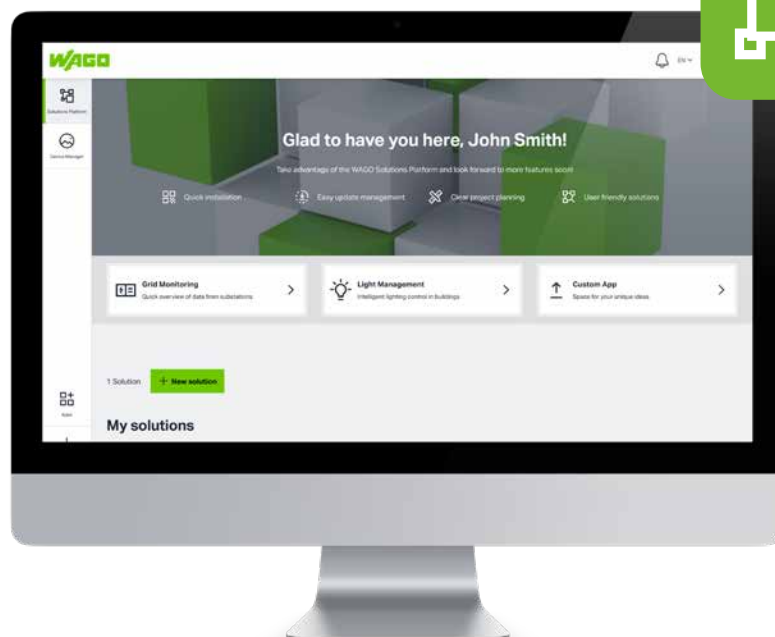


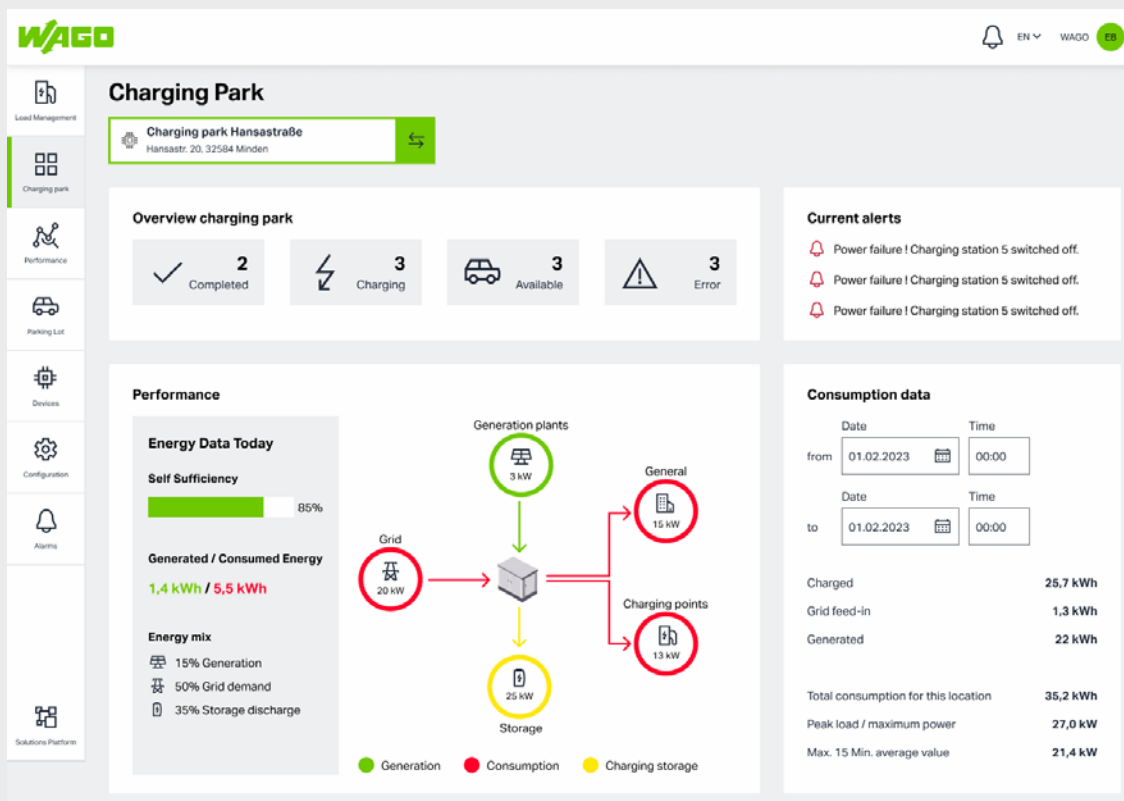
Available



Your Benefits:

- **Cybersecurity Certification (IEC 62443-4-2) aimed: Meets the highest cybersecurity requirements without open ports on the controllers**
- **Minimized data traffic between controllers and the WAGO Solutions Platform during updates**
- **Stable communication between the WAGO Solutions Platform and controllers, even with high latencies and unstable network connections**





WAGO Charging Park Management

User-Friendly Management of EV Charging Parks

As an application of the WAGO Solutions Platform, WAGO Charging Park Management enables the simultaneous management of multiple, larger charging parks. It expands WAGO Application Load Management, which controls dynamic load management.

Existing configurations can be adapted remotely and transferred to the device. Measured values are documented for reporting and can be exported. Configuring charging groups enables hierarchical structure and precise coordination of the charging processes. Charging rules can be defined. User-defined specifications can be integrated. Patch and device management of the WAGO Solutions Platform allows for remote, parallel updates of multiple controllers.



Your Benefits:

- Always up to date on the status of charging parks
- Better scalability of the charging infrastructure for load management
- Energy flow monitoring and overview of relevant performance parameters



Software



Available via:



ctrlX OS EEBUS Connector

Networking for Digitalizing the Energy Transition

The open communication standard EEBUS enables the networking of devices and systems in energy management. The WAGO EEBUS Connector app offers a future-proof solution for seamless communication between grid operators and energy management systems.

The EEBUS protocol is used at the grid connection point. Control commands can be integrated to limit energy consumption and production, and are reported back to the grid connection point via the control box. The objective is to display control box data within the data layer of ctrlX OS, ensuring that all interfaces and data at the grid connection point are available for further processing. This enables a comprehensive energy management system for consumers and storage units.



Your Benefits:

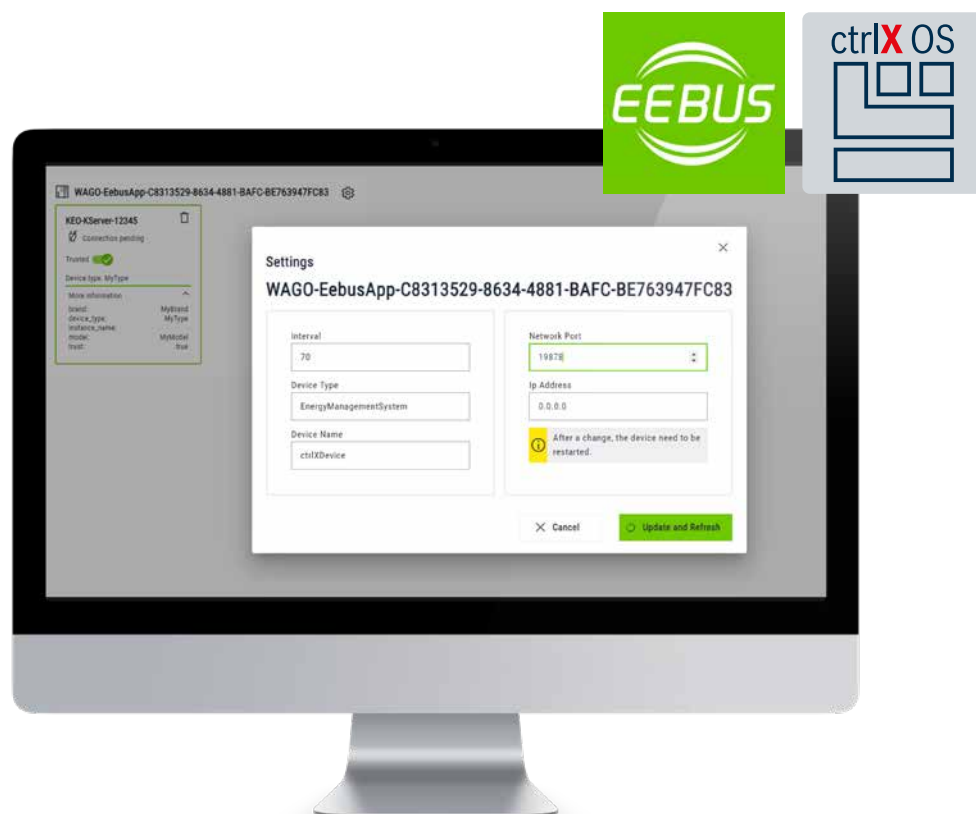
- Basis for grid-relevant control according to § 14a EnWG
- No programming experience required
- Download from the WAGO Download Center and ctrlX OS Store



Software



Available



WAGO

- Devices
- Configuration
- Applications
- Licensing
- Search
- Repository

- Search...
- Devices
 - Controller 1
 - PFC300-CDR1
 - PFC300-CDR2
 - PFC300-CDR3
 - PFC300-CDR4

MANAGED DEVICES (5)

			Entity	Hostname	Status reported at	Device address	MAC address	BACnet device ID
<input type="checkbox"/>	Synchronization state	Operation state	LED state	Controller 1				
<input type="checkbox"/>				PFC300-CDR1	2024-12-10 18:06:39	3.3.3.23	00:30:de:66:...	00:30:de:66:...
<input type="checkbox"/>				PFC300-CDR2	2024-12-10 18:06:39	3.3.3.23	00:30:de:66:...	00:30:de:66:...
<input type="checkbox"/>				PFC300-CDR3	2024-12-10 18:06:39	3.3.3.23	00:30:de:66:...	00:30:de:66:...
<input type="checkbox"/>				PFC300-CDR4	2024-12-10 18:06:39	3.3.3.23	00:30:de:66:...	00:30:de:66:...

WAGO Device Sphere

Easy Commissioning and Central Management of All Controllers

WAGO Device Sphere is now available for the centralized management of all WAGO controllers. This system is specifically designed to manage many controllers, setting WAGO Device Sphere apart from other software solutions for controller management.

With this software, it is possible to configure a very large number (>1000) of controllers:

- Commission without pre-configuration from an access point
- Integrate into a Docker®/Portainer environment
- Centrally manage assets with a clear overview
- Monitor system status
- Configure settings
- Deploy software, parameters and updates
- Upgrade to the required firmware version
- Integrate into secure networks (manage certificates)
- Meet security requirements

Each WAGO controller is represented by a digital twin in the WAGO Device Sphere to map a device's entire lifecycle.

Unpack and Go

WAGO Device Sphere allows controllers to be commissioned without preconfiguration using zero-touch provisioning.

The controllers receive their software and configuration directly from WAGO Device Sphere. The software monitors the status of all controllers and notifies users of unexpected deviations via push notification, email or direct message within the application. This ensures real-time visibility of each controller's status.

Centralized and Secure Management of All Controllers

The controllers can be centrally managed via a web-based platform accessible from a computer or tablet. One of the software's

core features is the integration of established container management systems. Settings are also configurable with these container management systems. With WAGO Device Sphere, it is also possible to define device parameters. Additionally, communication is secure and suitable for critical infrastructure, as all communication participants must authenticate and authorize each other. This prevents unauthorized access.

WAGO Device Sphere is available from the WAGO Download Center. The software can be operated locally from your computer, on-premises via the intranet or as a cloud application (SaaS).



Software

Item Number:

2759-014x

Available

Q2/2025

(on-premises),

Q4/2025 (cloud)



Your Benefits:

- All device management via central software
- Offline configuration via digital twin at any time
- Ready for other devices via open REST/API



WAGO Compact Controller 100

Greater Flexibility for Your Application

The WAGO Compact Controller 100 delivers maximum performance in a compact form factor, excelling in diverse applications worldwide. To enhance flexibility, WAGO is expanding its Compact Controller 100 portfolio with a variant featuring configurable I/Os, a mains filter and another version equipped with a DALI interface.

This expansion broadens the range of applications for the WAGO Compact Controller 100, allowing it to demonstrate its strengths in OEM applications, the energy sector and building technology. Furthermore, with the new DNV approval for existing item numbers 751-9301 and 751-9401, it is now also suited for maritime industry applications.

More Versatility: WAGO Compact Controller 100 with Multi-I/Os and Mains Filter

The WAGO Compact Controller 100 is now available with configurable I/Os. Unlike the first WAGO Compact Controller (Item No. 751-9301), users can freely configure each channel as an input or output. This enhanced versatility allows WAGO to break away from a preset I/O configuration. As a result, users gain greater flexibility during projects and can manage more applications with a single device.

The Multi-I/O controller features a more powerful dual-core processor and an additional RS-485 interface. Additionally, the WAGO Compact Controller 100 can be combined with a mains filter, enhancing its resilience against electromagnetic fields while meeting the energy sector's stringent requirements.



Your Benefits:

- **Maximum engineering flexibility thanks to configurable I/Os**
- **Additional serial interface (RS-485) for greater variability**
- **Robust electrical properties with mains filter**



Item Numbers:

751-9402 (Multi-I/Os)
751-1601 (mains filter)



Available

WAGO Compact Controller 100 with DNV Marine Approval

Reliable under extreme conditions: WAGO offers a high-performance compact controller for marine applications, as various WAGO Compact Controllers 100 (standard and CAN) are now also available with DNV marine approval. Vibration, humidity, temperature fluctuations and salt-laden air do not affect the controller. DNV certification meets the highest safety and quality standards, making the WAGO Compact Controller 100 ideal for demanding applications in marine environments.



Your Benefits:

- **DNV marine approval**
- **Compact controller with onboard I/Os**
- **Programmable via CODESYS and Node-RED**



Item Numbers:

751-9301 (DNV)
751-9401 (CAN DNV)
751-9402 (Multi I/O DNV)

**Available
Q1/2025**

Optimal Lighting: WAGO Compact Controller 100 with DALI-2

Whether in offices, shops or production and assembly facilities, the WAGO Compact Controller with the DALI interface opens up a wide range of applications in lighting technology and provides ideal lighting control.

Programming the compact controller is performed using CODESYS, the leading manufacturer-independent IEC-61131-3 programming tool. Thanks to its versatility, the WAGO Compact Controller 100 with DALI reliably puts your buildings in the right light.

Your Benefits:

- Integrated DALI line
- Engineering via CODESYS
- Versatile application in lighting technology

**WAGO
DEVICE
MANAGER:
FREE DOWN-
LOAD UNTIL
THE END OF
2025!**



Item Number:

751-9403 (DALI)

Available

Q2/2025

WAGO Device

Manager:

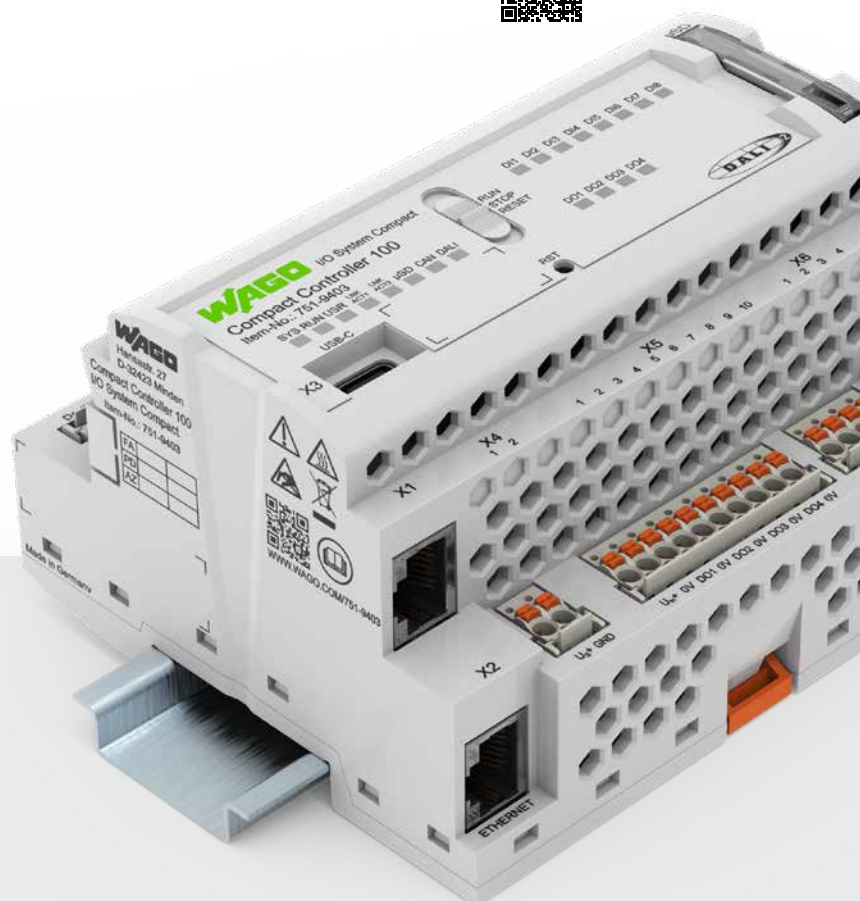
Available as a free download until the end of 2025.

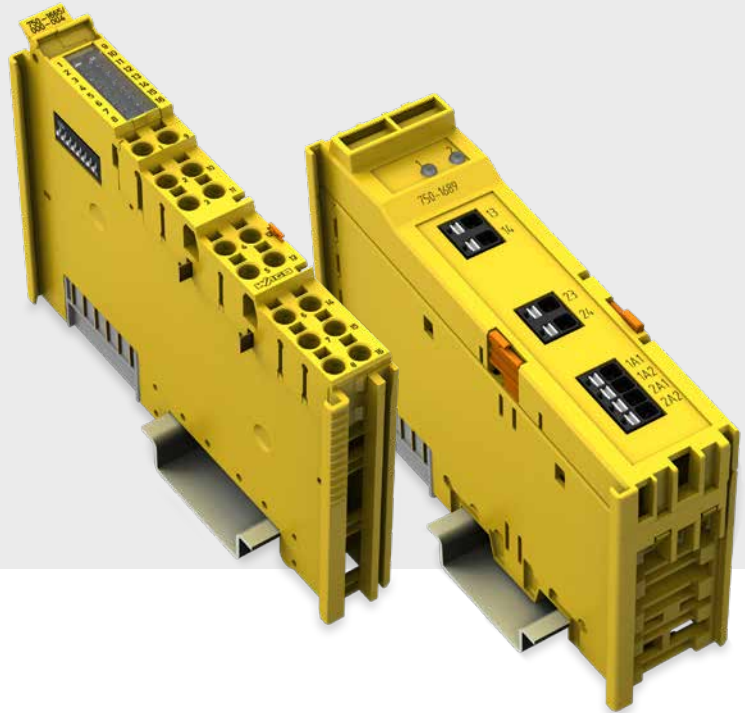
A license will be required thereafter.



WAGO Device Manager for the WAGO Compact Controller 100

For greater flexibility: With the WAGO Device Manager, configurations and changes to the parameters for commissioning and further operation can be easily performed on the WAGO Compact Controller 100. Since the parameters are stored in the controller, system operators can easily replace their devices and reduce downtime. With a single click, you can quickly find and download the WAGO Device Manager for the Compact Controller 100 from the WAGO Download Center.





WAGO I/O System 750: Digital Output + Relay Output

Cost-Effective, Space-Saving and Safe

With WAGO's eight safety digital outputs (24 VDC, 0.5 A), at a width of 12 mm and high channel density, users can implement safety digital outputs under safety controllers with PROFIsafe in a cost-effective and space-saving way. Applications up to SIL 3 Cat. 4/PL e can thus be achieved. Each safety digital output has a dual-channel structure and functions with a dynamic test pulse. The new module supports PROFIsafe V2.6 and V2.4 and can be used with PROFIBUS® and PROFINET®.

Users can control the new relay module via the safety digital outputs. The combination of 8FDO and the new relay module enables cost-effective and flexible solutions.

Greater Flexibility with Safety Relay Output

The new safety relay output modules provide a flexible, cost-effective solution for safety applications requiring potential-free contact control. Capable of handling up to 250 V and 6 A AC/DC, these modules offer enhanced flexibility while reducing lifecycle costs when relays need replacement due to switching cycles (B10d).

The new relay module is compatible with all previous WAGO PROFIsafe output modules as well as the latest logic modules.



Your Benefits:

- Cost-effective and powerful
- Flexible use
- Compact



Item Numbers:

750-1665/000-004,
750-1689

Available
Q2/2025

WAGO I/O System 750

New KNX TP Secure Interface Module

WAGO has further developed the previous KNX TP1 Interface (Item No. 753-646). KNX® is a uniform, manufacturer-independent communication protocol for intelligently networking modern home and building system technology. The successor module (Item No. 753-1646) brings several changes for users. The new KNX TP Secure Interface Module is ETS5/6 compliant, including Data Secure. Thus, there is no longer a compatibility mode. It also supports up to 1,000 objects, making it significantly more powerful than its predecessor.

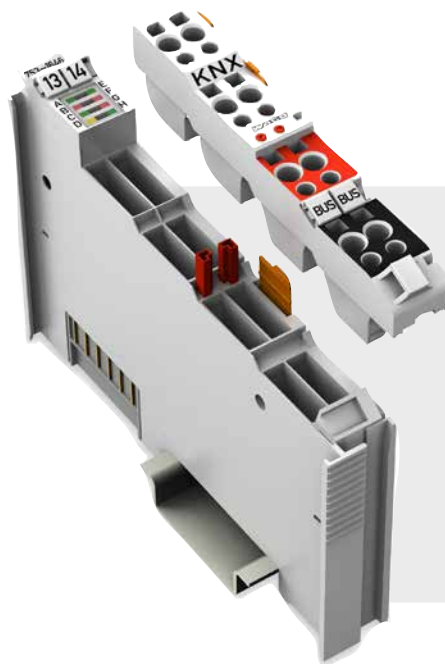
Another advantage: The module is very easy to use and has better synchronization mechanisms. By increasing the number of objects from 253 to 1,000, use in large projects is simplified and cost-effective. Additionally, the web-based DCA (Device Control App) replaces the previously used plug-ins.

The new KNX TP Secure Interface Module is future-proof for upcoming expansions.



Your Benefits:

- Full ETS5/6 compatibility, including Data Secure
- Web-based user interface simplifies operation
- Economical



Item Numbers:

753-1646

Available

End Q1/2025

WAGO Industrial Interface

Industrial Ethernet Extension Module for WAGO Edge Computer



WAGO is expanding its Edge Computer portfolio with two new Industrial Ethernet modules, which are fully compatible with existing versions (from hardware version V2). These expansion modules with Industrial Ethernet support all standard Ethernet interfaces. Depending on the requirements, the modules can be configured for EtherCAT®, EtherNet/IP™ or PROFINET®. With this expansion, WAGO offers a precisely tailored solution for various applications.



Item Numbers:

758-9017

(2 x Industrial Ethernet, Master),

758-9018

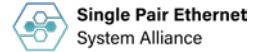
(2 x Industrial Ethernet, Slave)



Available

WAGO Industrial Media Converter

ETHERNET Communication via Copper Cables Up to 1000 Meters



The WAGO Industrial Media Converter supports ETHERNET communication over distances up to 1000 meters. With its 10 Mbit/s RJ-45 ETHERNET port and SPE ETHERNET port (10BASE-T1L), you can cost-effectively build ETHERNET networks using copper cables or flexibly extend their reach.

Utilizing existing cabling is particularly beneficial because it enables seamless integration of decentralized ETHERNET-capable devices into automation systems with minimal installation effort. The SPE data line's individual wires can be connected effortlessly via WAGO's female connector with Push-in CAGE CLAMP® technology.



Your Benefits:

- Enables ETHERNET communication over distances up to 1000 meters using existing cabling
- Replaces DSL or fiber-optic connections with a single copper twisted pair
- High resistance to temperature fluctuations, vibrations and shock – ideal for industrial environments



Item Number:

852-1705 (SPE 10
BASE-T1L to 10BASE-T)



Available

WAGO Industrial Managed Switch

Increase System Availability

The WAGO Industrial Managed Switch is designed for seamless operation within PROFINET® networks, allowing users to manage two media redundancy protocol rings (MRC and MRM) with a single switch. This redundant communication system enhances reliability and ensures maximum uptime for industrial applications.

By cyclically reading process image data, the network can be monitored and diagnosed via PROFINET®. With PROFINET® certification and Conformance Class B (CC-B), the device can be easily integrated into development environments using the PROFINET® Configurator. Firmware updates can be performed quickly via USB.



Your Benefits:

- Increased system uptime through redundant communication
- Four fiber optic connections for potential-free integration into higher-level networks
- Simplified commissioning via GSD-ML file configuration



Item Number:

852-1605/000-001

Available
starting Q2/2025



Green Range

WAGO Green Range 221 Series Expands

The Green Range product family is expanding. In addition to the WAGO Green Range Splicing Connector with Levers, with a conductor cross-section of 4 mm², the connector is now also available with a conductor cross-section of 6 mm². The WAGO Inline Splicing Connector with Levers, 221 Series, 4 mm², is now also available in a Green Range variant.

Bio-based residues comprise 77% of the housings for the Green Range variants. These residues are sourced from industry and households, such as tall oil and used fats from edible oil production. The levers consist of 26% bio-circular plastics. This bio-circular plastic is derived from biogases. It originates from organic residues.

Bio-based materials reduce the use of fossil resources. They also keep raw materials in circulation, supporting the "circular economy." On the plastic level, the 221 Series

Green Range (6 mm²) saves between 68 and 71% CO₂ emissions, depending on the number of clamping points, compared to the classic 221 Series Splicing Connector with Levers. The Green Range Inline Splicing Connector with Levers saves 73% CO₂ emissions on the plastic level compared to the classic model. The products' environmental footprint (PCF) is accessible via the Asset Administration Shell (AAS).



Your Benefits:

- **Plastics based on biogases and bio-circular residues**
- **Reduced use of fossil resources**
- **Same certifications as standard 221 Series Splicing Connectors and Inline Splicing Connectors**



Item Numbers:

WAGO Splicing Connector with Levers Green Range, 6 mm²:

221-622, 221-623, 221-625

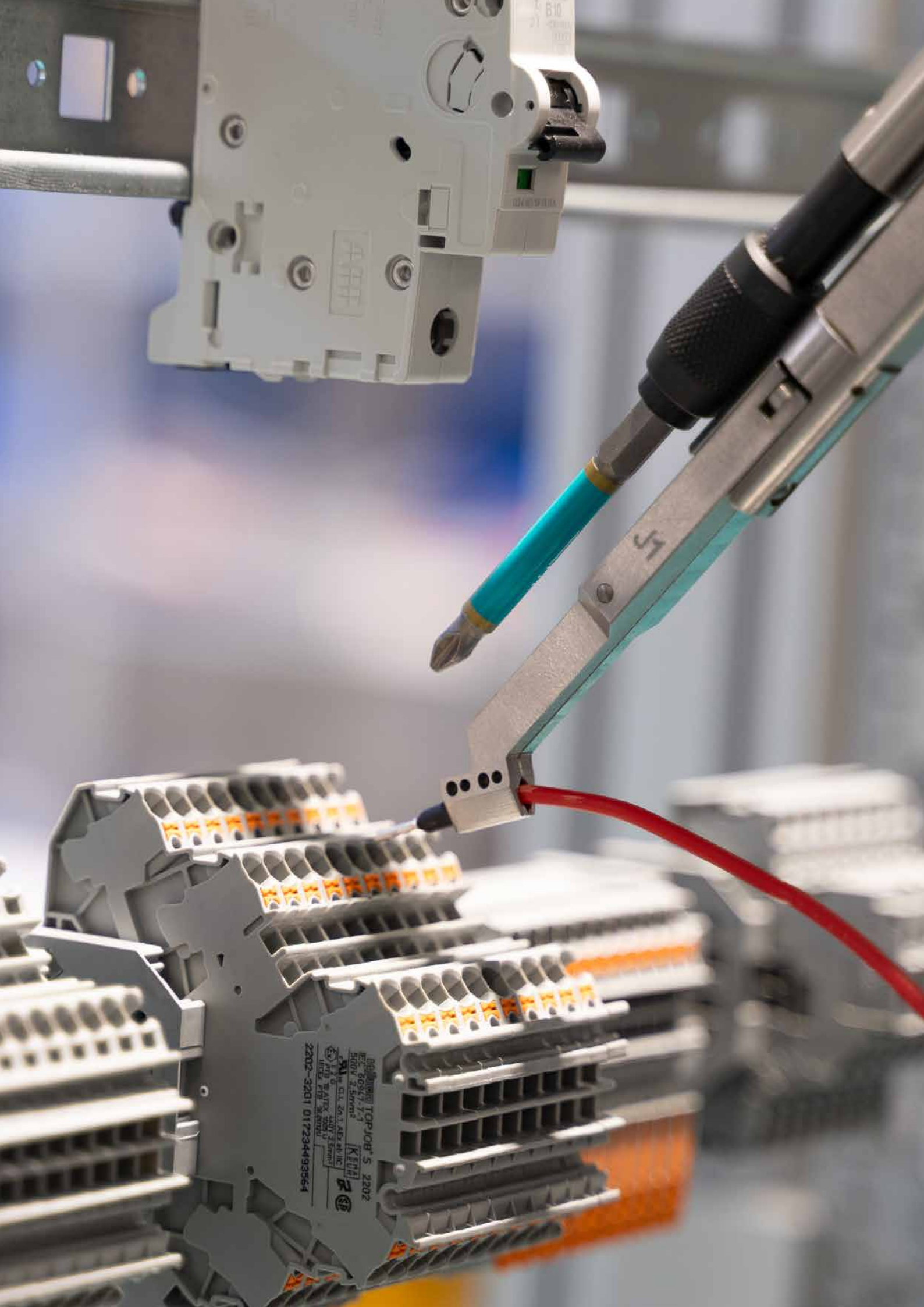
WAGO Inline Splicing Connector with Levers Green Range:

221-2431, 221-2431

WAGO Splicing Connector with Levers Green Range, 4 mm²:

221-422, 221-423, 221-425





WAGO Cabinet Wiring Robot

60% More Efficient Wiring of Control Cabinets

Wiring control cabinets remains a heavily manual process. Therefore, control cabinet manufacturers are searching with new intensity for solutions that economize wiring, saving time and money while offsetting the skills shortage.

Automation of Control Cabinet Wiring

WAGO is actively addressing customer needs and has already introduced the WAGO Cabinet Wiring Robot as the first solution for automated control cabinet assembly at the Hanover Fair 2024. With this new automation solution, WAGO aims to streamline an additional step in the control cabinet manufacturing process.

Make Your Control Cabinet Wiring 60% More Efficient

The WAGO Cabinet Wiring Robot is a modular system with 4.5 axes, designed for highly efficient control cabinet wiring. It functions seamlessly with WAGO rail-mount terminal blocks, as well as components from other manufacturers, offering universal compatibility. The robot supports both screw and spring clamp connections, making it ideal for wiring automatic circuit breakers and rail-mount terminal blocks.

Fully Automated Conductor Preparation

Thanks to fully automated conductor preparation – including cutting to length, stripping, and crimping – the WAGO Cabinet Wiring Robot reduces manual labor by 60% for the single-sided wiring of mounting frames and plates. Supported conductor cross-sections range from 0.5 to 2.5 mm², with an average process-

ing time of 45 seconds per conductor. The integrated camera technology also performs a preemptive target/actual comparison to verify that the components are correctly assembled. If minor deviations occur, the robot adjusts wiring accordingly in the digital product data – enhancing process reliability.

Another advantage: The robot can be easily integrated into existing control cabinet planning processes, eliminating 3D CAE engineering.



Your Benefits:

- 60% more efficient control cabinet wiring by reducing manual labor
- Manufacturer-independent and connection technology-independent component wiring
- Easy integration – no 3D CAE engineering required



Availability:
upon request

TOPJOB® S

5-Conductor Rail-Mount Terminal Block With and Without Push-Button



The WAGO TOPJOB® S portfolio is expanding with a new 5-conductor rail-mount terminal block, available with or without a push-button. With a nominal cross-section of 1.5 mm² (maximum 2.5 mm²), this terminal block, in combination with the WAGO Distribution Terminal Block (Item No. 2206-8031/2006-8031), is ideal for potential distribution in control cabinets. The key benefits: it reduces the number of terminal blocks required on the DIN-rail, which optimizes space usage in the control cabinet and improves organization.



Item Numbers:

2001/2201-150x
(01 gray, 03 red, 04 blue,
05 black)

End Plates:

2002-1595

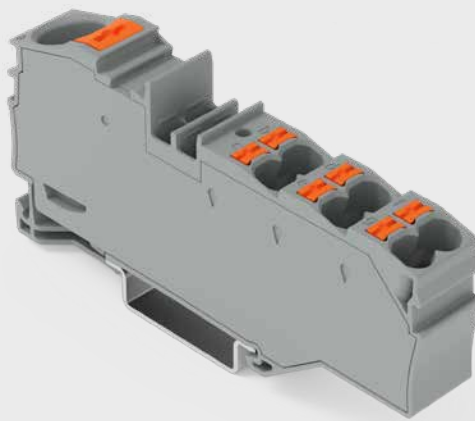
Available

End Q1/2025

TOPJOB® S

Distribution Terminal Block with 16 mm² Cross-Section

The TOPJOB® S distribution terminal block portfolio now includes a larger version with a 16 mm² cross-section and a total of six 4 mm² outputs. This enhancement enables even more space-efficient potential distribution using a single terminal block. Additionally, the new distribution terminal block seamlessly integrates into the existing TOPJOB® S range and is compatible with both 2004 Series Jumpers and Marking Strips.

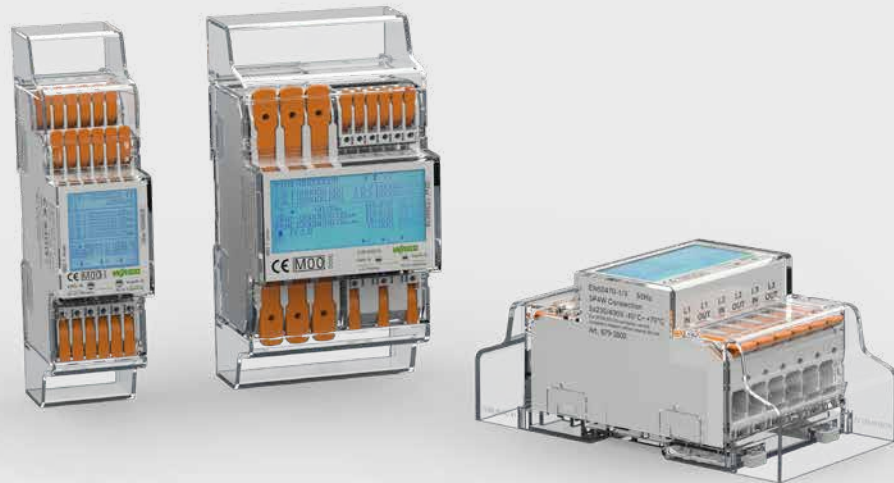


Item Number:

2016/2216-803x

Available

Q1/2025



Note: Image for reference only

WAGO MID Energy Meters

New Devices – Wide Range of Applications

WAGO has expanded its range of MID energy meters to include new single-phase devices and three-phase models with an integrated Modbus TCP interface and optional calibration approval. These meters support applications in semi-public billing, ISO 50001 energy management and public EV charging infrastructure.

The three-phase devices offer several interfaces (e.g., Modbus RTU, Modbus TCP, M-Bus, WiFi and *Bluetooth*® Low-Energy) and are available in multiple connection types (U and S connections). WAGO ensures maximum flexibility so that you always have the right device at hand – whether it's a new system or a retrofit. The proven Push-in CAGE CLAMP® connection with lever technology ensures secure, maintenance-free installation while reducing time and cost.



Available
starting Q4/2025



Number of Phases	Input Current	Interfaces	Connection Technology	Additional Features	Item Number
1-phase	Direct: 32 A	1 x S0, Modbus RTU	U		0879-1300
1-phase	Direct: 65 A	2 x S0, Modbus RTU, M-Bus, <i>Bluetooth</i> ® Low Energy, WiFi	U		0879-1100
3-phase	Direct: 65 A	2 x S0, Modbus RTU and TCP, <i>Bluetooth</i> ® Low Energy, WiFi	U / S		0879-3100 / 0879-3120
3-phase	Direct: 65 A	2 x S0, Modbus RTU, M-Bus, <i>Bluetooth</i> ® Low Energy, WiFi	U / S		0879-3200 / 0879-3220
3-phase	Direct: 65 A	2 x S0, Modbus RTU and TCP, <i>Bluetooth</i> ® Low Energy, WiFi	U / S	Calibration approval, OCMF v.1.2.0	0879-3102 / 0879-3122

WAGO Pro 2 Display Module

The Add-on for Your Power Supply

The WAGO Pro 2 Display Module offers a cost-effective solution for real-time monitoring of WAGO Pro 2 Power Supplies. The easy-to-mount display provides a clear overview of key supply parameters, including: total runtime (in Kh), remaining service life (in %) and number of overvoltage events. If necessary, you can plan proactively to replace the power supply, avoiding unplanned system downtime.

The WAGO Pro 2 Display Module is suitable for all Pro 2 Power Supplies and can be connected during operation (hot swapping).



Your Benefits:

- Real-time status monitoring
- No additional space required in the control cabinet
- Indicative life estimate



Item Number:

2789-9090



Available

WAGO Power Supply Base

Power Supply Portfolio Keeps Growing – Now Also Available in 3-Phase

WAGO's power supply portfolio is growing: A three 3-phase and one 1-phase device from the Base Power Supply series – designed to cost-effectively perform basic functions – are coming soon.

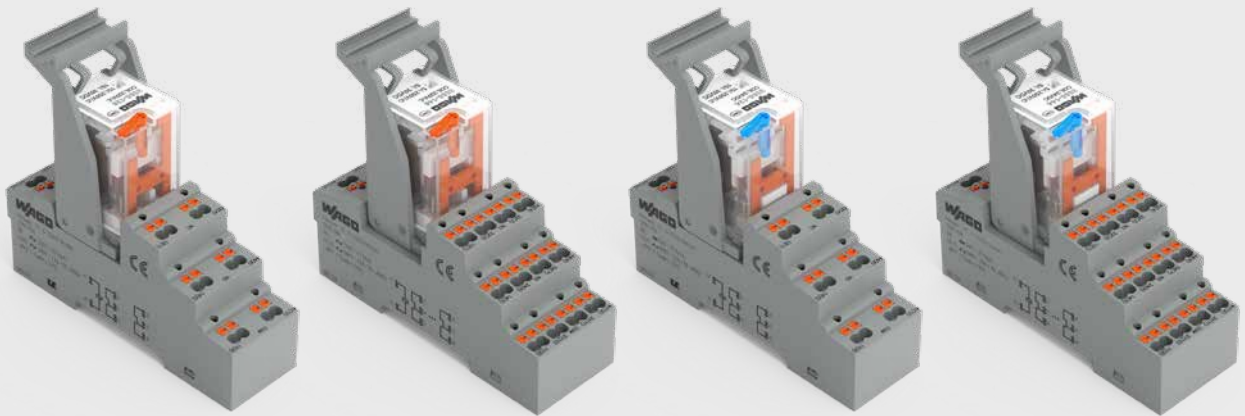
The new additions are designed for output currents of 10, 20 and 40 A (3-phase) and 40 A (1-phase). They are ideal for applications requiring efficiency, ease of use and reliability.



Item Numbers:

2587-2148 (1-ph., 40 A)
2587-2346 (3-ph., 10 A)
2587-2347 (3-ph., 20 A)
2587-2348 (3-ph., 40 A)

Available
Mid-Q2/2025



Relays, 2585 Series

Basic Functions at a Fair Price

The new WAGO 2585 Series Relays cover key functionalities in switchgear units and offer a well-balanced price/performance ratio. Sockets and elementary relays are available individually or as preconfigured modules and can be flexibly used together, increasing versatility.

The 2585 Series is designed for nominal input voltages of 24 VDC or 230 VAC and offers versions with two or four changeover contacts. In addition, the new additions boast a high temperature tolerance range (-40 ... +70 °C) and the option of manual operation. Switching with a focus on the essentials – whether in mechanical engineering or building technology.



Item Numbers:

2585-0324 (24VDC 2CO)
2585-0344 (24VDC 4CO)
2585-0528 (230VAC 2CO)
2585-0548 (230VAC 4CO)



Available

Item Number	Type	Coil Voltage	Number of Changeover Contacts
2585-0324	Coupling relay module	24 VDC	2
2585-0344	Coupling relay module	24 VDC	4
2585-0528	Coupling relay module	230 VAC	2
2585-0548	Coupling relay module	230 VAC	4
2585-0102	Relay socket	5 ... 250 VAC/DC	2
2585-0104	Relay socket	5 ... 250 VAC/DC	4
2585-0124	Basic relay	24 VDC	2
2585-0144	Basic relay	24 VDC	4
2585-0128	Basic relay	230 VAC	2
2585-0148	Basic relay	230 VAC	4

WAGO Thermal Simulation Tool

Easily Determine Temperature Range

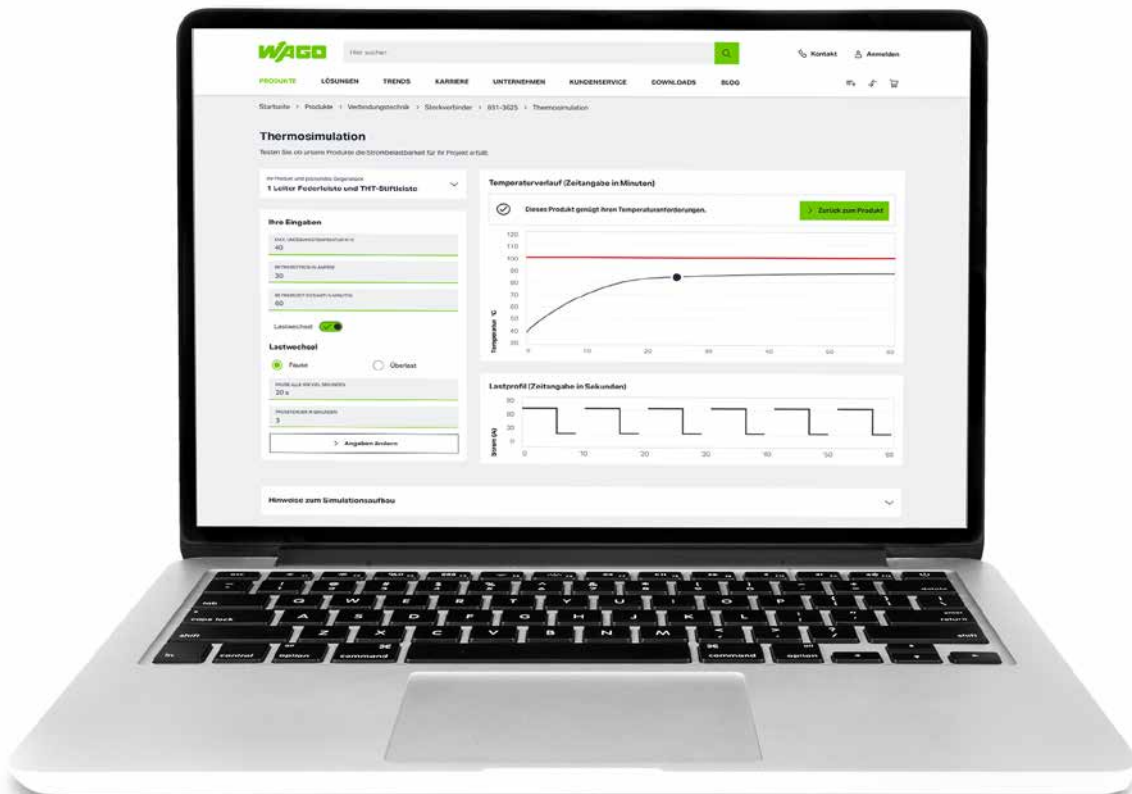
A decisive factor in selecting PCB terminal blocks and pluggable connectors is the current-carrying capacity. It results from the maximum permissible current heating. Current-carrying capacity curves or deratings reflect the static case without load change by default. In many cases, however, a device is not operated continuously with the same current load but with a cyclic load profile. With the WAGO Thermal Simulation Tool, available on the product detail page in the WAGO eShop, you can review these cases without conducting your own simulation or testing.

The maximum component temperature and a quick evaluation are displayed for an individual load profile and ambient temperature. Initially available for select PCB terminal blocks and pluggable connectors, such as item numbers 2606, 831 and 832, this tool will gradually expand with additional item numbers.



Your Benefits:

- Easily check current carrying capacity
- Obtain individual load profiles and ambient temperature
- Available for a selection of WAGO PCB connection technology



2606 + 2616 Series

WAGO PCB Terminal Blocks as 30° Version

The 2606 and 2616 Series PCB Terminal Blocks are now available in an angled 30° version. They have the same technical characteristics as the 2606 and 2616 Series PCB Terminal Blocks in 0° and 90° versions. Since they have the same footprint as the terminal blocks in the 0° and 90° variants, they can be flexibly replaced when creating a PCB. The terminal blocks are used, for example, in wallboxes or photovoltaic systems.

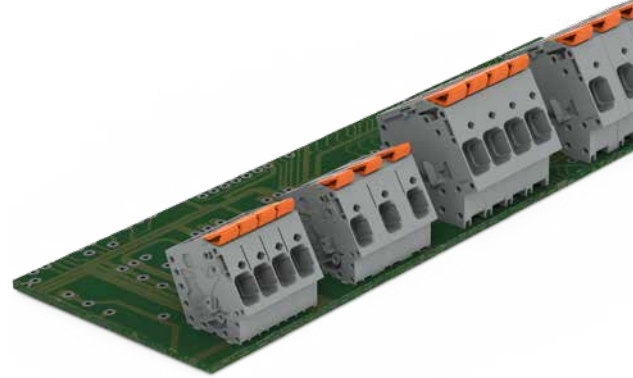


Item Numbers:

2606-21xx, 2606-23xx
2616-21xx, 2616-23xx

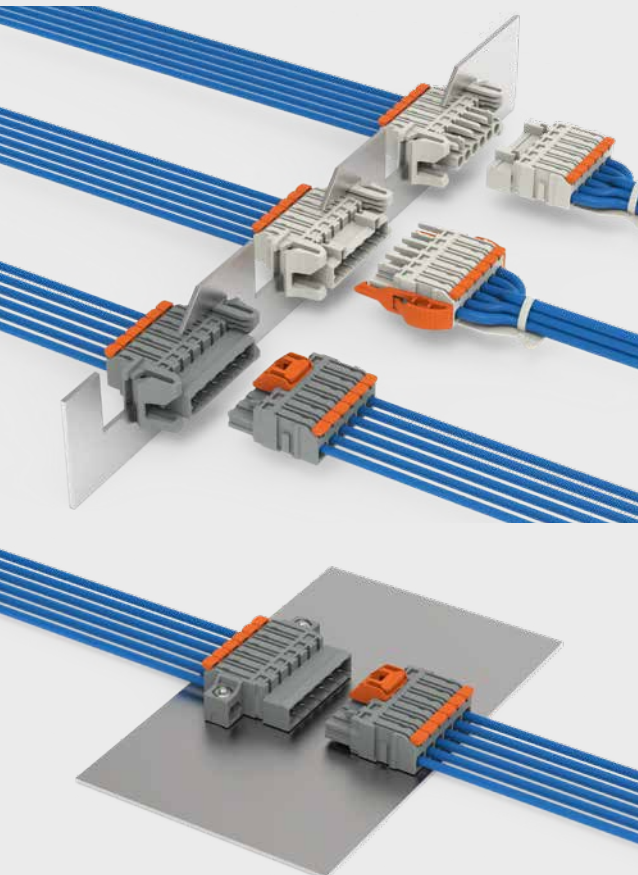


Available



MCS MIDI

New Accessories for MCS MIDI Pluggable PCB Connectors



A wide range of accessories is now available for the MCS MIDI Pluggable PCB Connection System with a pin spacing of 5 mm. Strain relief plates are now available to keep the cable pull away from the clamping unit. They also prevent individual wires from being pulled out. Mounting flanges and snap-in flanges for male and female connectors are available for securing the connector. These flanges are available for in-the-field and factory assembly. Both flanges allow male and female connectors to be mounted via feedthrough connection. The mounting flanges are also suitable for surface mounting.



Your Benefits:

- Strain relief plates for greater safety and easier use
- Screwable mounting flange for in-the-field and factory assembly
- Snap-in flanges for tool-free feedthrough mounting



Item Numbers:

Strain relief plate:

2231-053X,
2231-110X/0327-0000/
033X-0000, 2231-160X/
033X-0000

Mounting flange:

2231-0580,
2231-110X/0331-0000,
2231-160X/0019-0000

Snap-in flange:

2231-0585,
2231-110X/0126-0000,
2231-160X/0114-0000

Available
Q2/2025

WAGO Keeps You Up to Date

WAGO Marking App

The WAGO Thermal Transfer Smart Printer is controllable with the WAGO Marking App. The app is now also available in the Apple App Store.



Available



The WAGO App

The Daily Digital Helper in Your Pocket! Helpful functions such as image recognition, electrical calculation tools or cross-section calculators make electricians' hearts beat faster. Benefit from access to all information on WAGO products or use the dealer search to see where your desired WAGO product is available – in real-time.




TRY
IT NOW!






Wire Stripper for Conductors up to 6 mm²

High-quality and functional hand tools are essential for electrical installers. WAGO already has a comprehensive tool portfolio, which now includes a new wire stripper for conductors up to 6 mm². This wire stripper is suitable for stripping from 0.2 to 6 mm² and cutting from 0.2 to 2.5 mm². The rubberized two-component handle also contributes to ergonomic and safe use.

	Item Number:	Available
	206-1141	Q1/2025

WAGO Power Plant Control/Power Plant Controller – Network- and Standards-Compliant Features

WAGO Power Plant Control and power plant controllers comply with grid requirements for feed-in management. New features support frequency-dependent operation (FSM), enabling frequency restoration to the target frequency within the tolerance band of P(f) or limited FSM-O, -U. Overfrequency and underfrequency can be individually parameterized. Thanks to Pav,e monitoring, alternative connection capacities can be agreed upon. If the limit is exceeded, the capacity is adjusted to or below Pav,e.

	Item Number:	Available
	2759-203/211-1000	Q2/2025



WAGO GmbH & Co. KG
Postfach 2880 · 32385 Minden
Hansastraße 27 · 32423 Minden
info@wago.com
www.wago.com

Headquarters	+49 (0)571/ 887 - 0
Sales	+49 (0)571/ 887 - 44 222
Orders	+49 (0)571/ 887 - 44 333



WAGO is a registered trademark of WAGO Verwaltungsgesellschaft GmbH.

"Copyright – WAGO GmbH & Co. KG – All rights reserved. The content and structure of the WAGO websites, catalogs, videos and other WAGO media are subject to copyright. Distribution or modification of the contents of these pages and videos is prohibited. Furthermore, the content may not be copied or made available to third parties for commercial purposes. Also subject to copyright are the images and videos that were made available to WAGO GmbH & Co. KG by third parties."